

# Anti-Glycylpeptide N-tetradecanoyltransferase 1 antibody

Catalog: PHY1851S

## Product Information

<b>Description:</b>	Rabbit polyclonal antibody
<b>Background:</b>	<i>Arabidopsis thaliana</i> , like human, has two tightly regulated N-myristoyltransferase (NMT) genes, <i>NMT1</i> (AT5G57020) and <i>NMT2</i> (AT2G44170). The AtNMT1 expression profile indicated ubiquity in roots, stem, leaves, flowers, and siliques (approximately 1.7 kb transcript and approximately 50 kDa immunoreactive polypeptide) but a greater level in the younger tissue, which are developmentally very active.
<b>Synonyms:</b>	NMT1, ARABIDOPSIS THALIANA MYRISTOYL-COA:PROTEIN N-MYRISTOYLTRANSFERASE, ATNMT1, MYRISTOYL-COA:PROTEIN N-MYRISTOYLTRANSFERASE
<b>Immunogen:</b>	KLH-conjugated synthetic peptide (16 aa from N terminal section) derived from <i>Arabidopsis thaliana</i> NMT1 (AT5G57020).
<b>Form:</b>	Lyophilized
<b>Quantity:</b>	150 µg
<b>Purification:</b>	Serum Peptide affinity form antibody available upon request at <a href="mailto:info@phytoab.com">info@phytoab.com</a> .
<b>Reconstitution:</b>	Reconstitution with 150 µl of sterile water. "Note: please spin tube briefly prior to opening it to avoid any losses that might occur from lyophilized material adhering to the cap or sides of the tube".
<b>Stability &amp; Storage:</b>	Use a manual defrost freezer and avoid repeated freeze-thaw cycles. 12 months from date of receipt, -20 to -70°C as supplied. 6 months, -20 to -70°C under sterile conditions after reconstitution. 1 month, 2 to 8°C under sterile conditions after reconstitution.
<b>Shipping:</b>	The product is shipped at 4°C. Upon receipt, store it immediately at the temperature recommended above.

## Application Information

<b>Recommended Dilution:</b>	Western Blot (1:1000-1:2000) Note: Optimal dilutions/concentrations should be determined by the
------------------------------	--

Research Use Only

end user.

**Expected / apparent MW:**

50 kDa

**Confirmed Reactivity:**

*Arabidopsis thaliana*

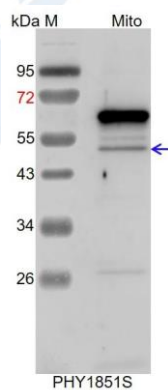
**Predicted Reactivity:**

Among species analyzed, the sequence of the synthetic peptide used for immunization is 100% homologues with the sequence in *Glycine max*, *Populus trichocarpa*, *Brassica napus*, *Brassica rapa*, *Gossypium raimondii*, *Medicago truncatula*, and 80-99% homologues with the sequence in *Vitis vinifera*, *Spinacia oleracea*, *Solanum tuberosum*, *Nicotiana tabacum*, *Cucumis sativus*, *Panicum virgatum*, *Hordeum vulgare*, *Triticum aestivum*, *Setaria viridis*, *Physcomitrium patens*, *Chlamydomonas reinhardtii*, *Solanum lycopersicum*, *Oryza sativa*, *Sorghum bicolor*, *Zea mays*.

For more species homologues information, please contact tech support at [tech@phytoab.com](mailto:tech@phytoab.com).

## Application Example

### Example1:



Mito: 10 µg mitochondria protein from *Arabidopsis thaliana*.

**Electrophoresis:** 15% SDS-PAGE

**Transfer:** blotting to NC (nitrocellulose) membrane for 1 h.

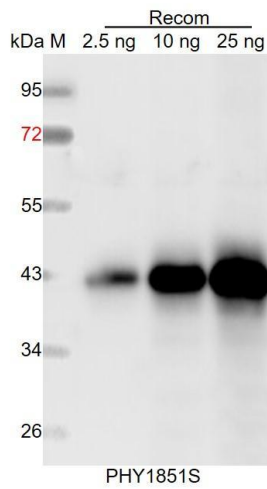
**Blocking:** 5% skim milk at RT or 4°C for 1 h.

**Primary antibody:** 1:1000 dilution overnight at 4°C.

**Secondary antibody:** 1:10000 dilution using Goat Anti-Rabbit IgG H&L (HRP) (Cat# PHY6000).

**Detection:** using chemiluminescence substrate and image were captured with CCD camera.

## Example2:



Recom: 2.5 ng, 10 ng and 25 ng recombinant protein containing the peptide for immunization and having a molecular mass of 43 kDa.

**Electrophoresis:** 12% SDS-PAGE

**Transfer:** blotting to NC (nitrocellulose) membrane for 1 h.

**Blocking:** 5% skim milk at RT or 4°C for 1 h.

**Primary antibody:** 1:1000 dilution overnight at 4°C.

**Secondary antibody:** 1:10000 dilution using Goat Anti-Rabbit IgG H&L (HRP) (Cat# PHY6000).

**Detection:** using chemiluminescence substrate and image were captured with CCD camera.