

Anti-26S proteasome non-ATPase regulatory subunit 11 homolog, N-terminal antibody

Catalog: PHY3638S

Product Information

| | |
|---------------------------------|---|
| Description: | Rabbit polyclonal antibody |
| Background: | RPN6 is the component of the lid subcomplex of the 26S proteasome, a multiprotein complex involved in the ATP-dependent degradation of ubiquitinated proteins. |
| Synonyms: | RPN6, ATS9, NON-ATPASE SUBUNIT 9, REGULATORY PARTICLE NON-ATPASE 6 |
| Immunogen: | KLH-conjugated synthetic peptide of (17 aa from Central section) derived from <i>Arabidopsis thaliana</i> RPN6 (AT1G29150). |
| Form: | Lyophilized |
| Quantity: | 150 µg |
| Purification: | Serum Peptide affinity form antibody available upon request at info@phytoab.com . |
| Reconstitution: | Reconstitution with 150µl of sterile water. "Note: please spin tube briefly prior to opening it to avoid any losses that might occur from lyophilized material adhering to the cap or sides of the tube". |
| Stability & Storage: | Use a manual defrost freezer and avoid repeated freeze-thaw cycles. 12 months from date of receipt, -20 to -70°C as supplied. 6 months, -20 to -70°C under sterile conditions after reconstitution. 1 month, 2 to 8°C under sterile conditions after reconstitution. |
| Shipping: | The product is shipped at 4°C. Upon receipt, store it immediately at the temperature recommended above. |

Application Information

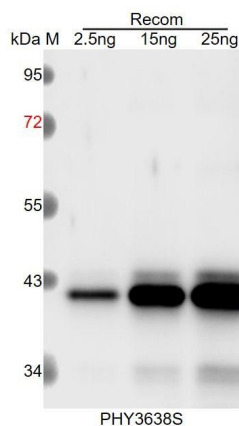
| | |
|--------------------------------|--|
| Recommended Dilution: | Western Blot (1:1000-1:2000) Note: Optimal dilutions/concentrations should be determined by the end user. |
| Expected / apparent MW: | 47 kDa |
| Predicted Reactivity: | Among species analyzed, the sequence of the synthetic peptide used for immunization is 100% homologues with the sequence in <i>Hordeum</i> |

Research Use Only

vulgare, *Triticum aestivum*, *Zea mays*, *Panicum virgatum*, *Sorghum bicolor*, *Setaria viridis*, *Oryza sativa*, *Brassica napus*, *Brassica rapa*, and 80-99% homologues with the sequence in *Sorghum bicolor*, *Panicum virgatum*, *Sorghum bicolor*, *Gossypium raimondii*, *Glycine max*, *Setaria viridis*, *Populus trichocarpa*, *Cucumis sativus*, *Brassica napus*, *Oryza sativa*, *Brassica rapa*, *Vitis vinifera*, *Physcomitrium patens*, *Medicago truncatula*, *Spinacia oleracea*, *Nicotiana tabacum*, *Solanum tuberosum*, *Solanum lycopersicum*.

For more species homologues information, please contact tech support at tech@phytoab.com.

Application Example



Recom: 2.5 ng, 15 ng and 25 ng recombinant protein containing the peptide for immunization and having a molecular mass of 41 kDa.

Electrophoresis: 12% SDS-PAGE

Transfer: blotting to NC (nitrocellulose) membrane for 1 h.

Blocking: 5% skim milk at RT or 4°C for 1 h.

Primary antibody: 1:1000 dilution overnight at 4°C.

Secondary antibody: 1:10000 dilution using Goat Anti-Rabbit IgG H&L (HRP) (Cat# PHY6000).

Detection: using chemiluminescence substrate and image were captured with CCD camera.