

# Anti-Epsilon subunit of chloroplast ATP synthase antibody

Catalog: PHY0315

## Product Information

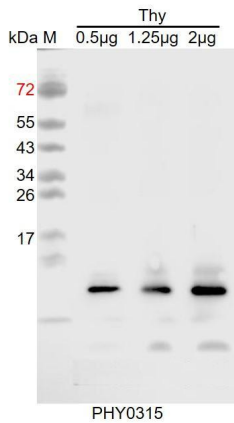
<b>Description:</b>	Rabbit polyclonal antibody
<b>Background:</b>	ATP synthase subunit epsilon is a subunit of the CF0 subcomplex of chloroplast ATP synthase. This subunit may be involved in the regulation of the chloroplast ATP synthase activity.
<b>Synonyms:</b>	AtpE, ATP synthase F1 sector epsilon subunit, F-ATPase epsilon subunit.
<b>Immunogen:</b>	Recombinant protein (1-132 aa) derived from <i>Arabidopsis thaliana</i> AtpE (ATCG00470).
<b>Form:</b>	Lyophilized
<b>Quantity:</b>	150 µg
<b>Purification:</b>	Protein A purified
<b>Reconstitution:</b>	Reconstitution with 150 µl of 0.01 M sterile PBS. "Note: please spin tube briefly prior to opening it to avoid any losses that might occur from lyophilized material adhering to the cap or sides of the tube".
<b>Stability &amp; Storage:</b>	Use a manual defrost freezer and avoid repeated freeze-thaw cycles. 12 months from date of receipt, -20 to -70°C as supplied. 6 months, -20 to -70°C under sterile conditions after reconstitution. 1 month, 2 to 8°C under sterile conditions after reconstitution.
<b>Shipping:</b>	The product is shipped at 4°C. Upon receipt, store it immediately at the temperature recommended above.

## Application Information

<b>Recommended Dilution:</b>	Western Blot (1:1000-1:2000) Note: Optimal dilutions/concentrations should be determined by the end user.
<b>Expected / apparent MW:</b>	14 kDa
<b>Confirmed Reactivity:</b>	<i>Arabidopsis thaliana</i>
<b>Predicted Reactivity:</b>	For more species homologues information, please contact tech support at <a href="mailto:tech@phytoab.com">tech@phytoab.com</a> .

Research Use Only

## Application Example



CCD camera.

Thy: thylakoid membrane protein from *Arabidopsis thaliana* leaf containing 0.5 µg, 1.25 µg, and 2 µg of chlorophyll, respectively.

**Electrophoresis:** 15% SDS-Urea-PAGE

**Transfer:** blotting to NC (nitrocellulose) membrane for 1 h.

**Blocking:** 5% skim milk at RT or 4°C for 1 h.

**Primary antibody:** 1:2000 dilution overnight at 4°C.

**Secondary antibody:** 1:10000 dilution using Goat Anti-Rabbit IgG H&L (HRP) (Cat# PHY6000).

**Detection:** using chemiluminescence substrate and image were captured with