

# Anti-PsbH subunit of Photosystem II antibody

Catalog: PHY2855A

## Product Information

<b>Description:</b>	Rabbit polyclonal antibody
<b>Background:</b>	PsbH is an 8 kDa phosphoprotein in the Photosystem II oxygen evolving core. The exact molecular function of PsbH has not been determined but it may play a role in mediating electron transfer between the secondary quinone acceptors, QA and QB.
<b>Synonyms:</b>	PsbH, PHOTOSYSTEM II REACTION CENTER PROTEIN H
<b>Immunogen:</b>	KLH-conjugated synthetic peptide (18 aa from Central section) derived from <i>Arabidopsis thaliana</i> PsbH (ATCG00710).
<b>Form:</b>	Lyophilized
<b>Quantity:</b>	150 µg
<b>Purification:</b>	Immunogen affinity purified
<b>Reconstitution:</b>	Reconstitution with 150 µl of 0.01 M sterile PBS. "Note: please spin tube briefly prior to opening it to avoid any losses that might occur from lyophilized material adhering to the cap or sides of the tube".
<b>Stability &amp; Storage:</b>	Use a manual defrost freezer and avoid repeated freeze-thaw cycles. 12 months from date of receipt, -20 to -70°C as supplied. 6 months, -20 to -70°C under sterile conditions after reconstitution. 1 month, 2 to 8°C under sterile conditions after reconstitution.
<b>Shipping:</b>	The product is shipped at 4°C. Upon receipt, store it immediately at the temperature recommended above.

## Application Information

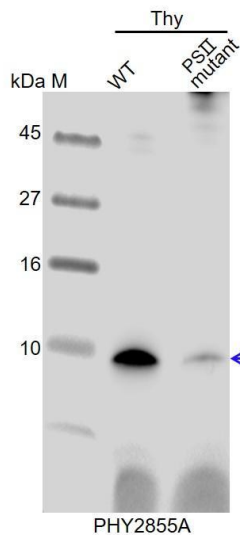
<b>Recommended Dilution:</b>	Western Blot (1:1000-1:2000) Note: Optimal dilutions/concentrations should be determined by the end user.
<b>Expected / apparent MW:</b>	8 kDa
<b>Confirmed Reactivity:</b>	<i>Arabidopsis thaliana</i>
<b>Predicted Reactivity:</b>	Among species analyzed, the sequence of the synthetic peptide used for immunization is 100% homologous with the sequence in

Research Use Only

*Medicago truncatula, Sorghum bicolor, Triticum aestivum, Leymus chinensis, Oryza sativa, Vitis vinifera, Glycine max, Brassica rapa, Cucumis sativus, Panicum virgatum, Nicotiana tabacum, Hordeum vulgare, Spinacia oleracea, Brassica napus, Populus trichocarpa, Zea mays, and 80-99% homologues with the sequence in Gossypium raimondii, Physcomitrium patens, Solanum tuberosum, Chlamydomonas reinhardtii.*

For more species homologues information, please contact tech support at [tech@phytoab.com](mailto:tech@phytoab.com).

## Application Example



captured with CCD camera.

Thy-WT: thylakoid membrane protein from WT of *Arabidopsis thaliana* containing 2.5 µg of chlorophyll.

Thy-PS II : thylakoid membrane protein from an *Arabidopsis* mutant with low accumulation of PS II containing 2.5 µg of chlorophyll.

**Electrophoresis:** Tricine-SDS-PAGE

**Transfer:** blotting to NC (nitrocellulose) membrane for 1 h.

**Blocking:** 5% skim milk at RT or 4°C for 1 h.

**Primary antibody:** 1:2000 dilution overnight at 4°C.

**Secondary antibody:** 1:10000 dilution using Goat Anti-Rabbit IgG H&L(HRP) (Cat# PHY6000).

**Detection:** using chemiluminescence substrate and image were