

Anti-26S proteasome regulatory subunit 6A homolog A antibody

Catalog: PHY3663S

Product Information

Description:	Rabbit polyclonal antibody
Background:	RPT5a (Regulatory Particle 5a), one of the six AAA-ATPases of the proteasome regulatory particle. It's essential for gametophyte development. In Arabidopsis, the RPT5 subunit is encoded by two highly homologous genes, RPT5a and RPT5b. RPT5a and RPT5b show accession-dependent functional redundancy.
Synonyms:	RPT5A, ATS6A.2, REGULATORY PARTICLE TRIPLE-A ATPASE 5A
Immunogen:	KLH-conjugated synthetic peptide (15 aa from Central section) derived from <i>Arabidopsis thaliana</i> RPT5A (AT3G05530).
Form:	Lyophilized
Quantity:	150 µg
Purification:	Serum Peptide affinity form antibody available upon request at info@phytoab.com .
Reconstitution:	Reconstitution with 150 µl of sterile water. "Note: please spin tube briefly prior to opening it to avoid any losses that might occur from lyophilized material adhering to the cap or sides of the tube".
Stability & Storage:	Use a manual defrost freezer and avoid repeated freeze-thaw cycles. 12 months from date of receipt, -20 to -70°C as supplied. 6 months, -20 to -70°C under sterile conditions after reconstitution. 1 month, 2 to 8°C under sterile conditions after reconstitution.
Shipping:	The product is shipped at 4°C. Upon receipt, store it immediately at the temperature recommended above.

Application Information

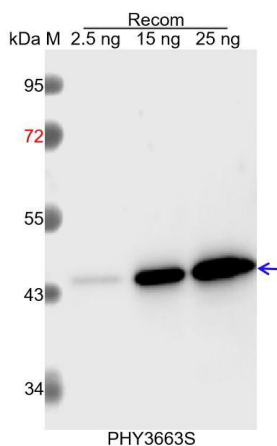
Recommended Dilution:	Western Blot (1:1000-1:2000) Note: Optimal dilutions/concentrations should be determined by the end user.
------------------------------	--

Research Use Only

Expected / apparent MW: 47 kDa

Predicted Reactivity: Among species analyzed, the sequence of the synthetic peptide used for immunization is 100% homologues with the sequence in *Brassica napus*, *Brassica rapa*, and 80-99% homologues with the sequence in *Nicotiana tabacum*, *Glycine max*, *Gossypium raimondii*, *Physcomitrium patens*, *Vitis vinifera*, *Medicago truncatula*, *Cucumis sativus*, *Populus trichocarpa*, *Solanum lycopersicum*, *Physcomitrium patens*, *Zea mays*, *Panicum virgatum*, *Setaria viridis*, *Sorghum bicolor*, *Triticum aestivum*, *Oryza sativa*, *Hordeum vulgare*.
For more species homologues information, please contact tech support at tech@phytoab.com.

Application Example



Recom: 2.5 ng, 15 ng and 25 ng recombinant protein containing the peptide for immunization and having a molecular mass of 45 kDa.

Electrophoresis: 12% SDS-PAGE

Transfer: blotting to NC (nitrocellulose) membrane for 1 h.

Blocking: 5% skim milk at RT or 4°C for 1 h.

Primary antibody: 1:1000 dilution overnight at 4°C.

Secondary antibody: 1:10000 dilution using Goat Anti-Rabbit IgG H&L (HRP) (Cat# PHY6000).

Detection: using chemiluminescence substrate and image were captured with CCD camera.