

# Anti-PsbE subunit of Photosystem II antibody

Catalog: PHY0124A

## Product Information

<b>Description:</b>	Rabbit polyclonal antibody
<b>Background:</b>	PsbE subunit of PSII is also called cytochrome b559 $\alpha$ . It is a small subunit of PSII and localized in the PSII reaction center. This subunit may play a protective role by acting as an electron acceptor or electron donor.
<b>Synonyms:</b>	PsbE, PHOTOSYSTEM II REACTION CENTER PROTEIN E, Cyt b559 $\alpha$
<b>Immunogen:</b>	KLH-conjugated synthetic peptide of PsbE (14 aa from Central section) derived from <i>Arabidopsis thaliana</i> PsbE (ATCG00580).
<b>Form:</b>	Lyophilized
<b>Quantity:</b>	150 $\mu$ g
<b>Purification:</b>	Immunogen affinity purified
<b>Reconstitution:</b>	Reconstitution with 150 $\mu$ l of 0.01 M sterile PBS. "Note: please spin tube briefly prior to opening it to avoid any losses that might occur from lyophilized material adhering to the cap or sides of the tube".
<b>Stability &amp; Storage:</b>	Use a manual defrost freezer and avoid repeated freeze-thaw cycles. 12 months from date of receipt, -20 to -70 $^{\circ}$ C as supplied. 6 months, -20 to -70 $^{\circ}$ C under sterile conditions after reconstitution. 1 month, 2 to 8 $^{\circ}$ C under sterile conditions after reconstitution.
<b>Shipping:</b>	The product is shipped at 4 $^{\circ}$ C. Upon receipt, store it immediately at the temperature recommended above.

## Application Information

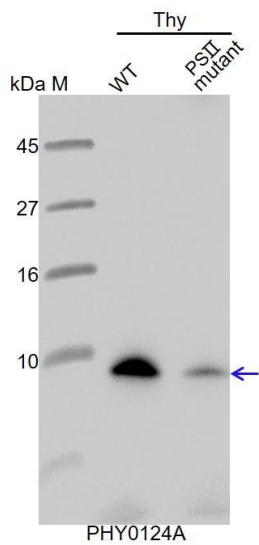
<b>Recommended Dilution:</b>	Western Blot (1:1000-1:2000) Note: Optimal dilutions/concentrations should be determined by the end user.
<b>Expected / apparent MW:</b>	9 kDa
<b>Confirmed Reactivity:</b>	<i>Arabidopsis thaliana</i>
<b>Predicted Reactivity:</b>	Among species analyzed, the sequence of the synthetic peptide used for immunization is 100% homologues with the sequence in <i>Triticum aestivum</i> , <i>Gossypium raimondii</i> , <i>Sorghum bicolor</i> , <i>Vitis vinifera</i> , <i>Brassica napus</i> , <i>Glycine max</i> , <i>Medicago truncatula</i> , <i>Oryza sativa</i> ,

Research Use Only

*Spinacia oleracea*, *Physcomitrium patens*, *Hordeum vulgare*, and 80-99% homologues with the sequence in *Nicotiana tabacum*, *Zea mays*, *Chlamydomonas reinhardtii*, *Populus trichocarpa*.

For more species homologues information, please contact tech support at [tech@phytoab.com](mailto:tech@phytoab.com).

## Application Example



CCD camera.

Thy-WT: thylakoid membrane protein from WT of *Arabidopsis thaliana* leaf containing 1.25 µg of chlorophyll.

Thy-PS II mutant: thylakoid membrane protein from an *Arabidopsis* mutant with low accumulation of PS II containing 1.25 µg of chlorophyll.

**Electrophoresis:** Tricine-SDS-PAGE

**Transfer:** blotting to NC (nitrocellulose) membrane for 1 h.

**Blocking:** 5% skim milk at RT or 4°C for 1 h.

**Primary antibody:** 1:2000 dilution overnight at 4°C.

**Secondary antibody:** 1:10000 dilution using Goat Anti-Rabbit IgG H&L(HRP) (Cat# PHY6000).

**Detection:** using chemiluminescence substrate and image were captured with