

# Anti-Thylakoid membrane cytochrome b6 protein, N-terminal antibody

Catalog: PHY0020S

## Product Information

<b>Description:</b>	Rabbit polyclonal antibody
<b>Background:</b>	The cytochrome b(6) subunit is the component of the cytochrome b6f complex, which mediates electron transfer between photosystem II (PSII) and photosystem I (PSI), cyclic electron flow around PSI, and state transitions.
<b>Synonyms:</b>	PetB, Cytochrome b6/f complex, Cyt b6, PHOTOSYNTHETIC ELECTRON TRANSFER B, PETB
<b>Immunogen:</b>	KLH-conjugated synthetic peptide (15 aa from N terminal section) derived from <i>Arabidopsis thaliana</i> PetB (ATCG00720).
<b>Form:</b>	Lyophilized
<b>Quantity:</b>	150 µg
<b>Purification:</b>	Serum Peptide affinity form antibody available upon request at <a href="mailto:info@phytoab.com">info@phytoab.com</a> .
<b>Reconstitution:</b>	Reconstitution with 150 µl of sterile water. "Note: please spin tube briefly prior to opening it to avoid any losses that might occur from lyophilized material adhering to the cap or sides of the tube".
<b>Stability &amp; Storage:</b>	Use a manual defrost freezer and avoid repeated freeze-thaw cycles. 12 months from date of receipt, -20 to -70°C as supplied. 6 months, -20 to -70°C under sterile conditions after reconstitution. 1 month, 2 to 8°C under sterile conditions after reconstitution.
<b>Shipping:</b>	The product is shipped at 4°C. Upon receipt, store it immediately at the temperature recommended above.

## Application Information

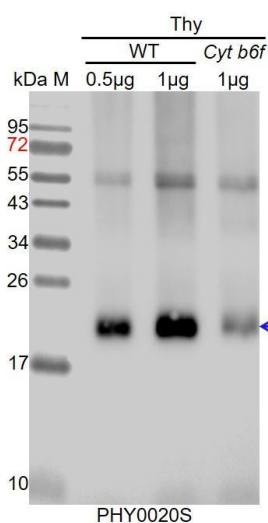
<b>Recommended Dilution:</b>	Western Blot (1:1000-1:5000) Note: Optimal dilutions/concentrations should be determined by the end user.
<b>Expected / apparent MW:</b>	24 kDa
<b>Confirmed Reactivity:</b>	<i>Arabidopsis thaliana</i>

Research Use Only

### Predicted Reactivity:

Among species analyzed, the sequence of the synthetic peptide used for immunization is 100% homologues with the sequence in *Brassica rapa*, *Brassica napus*, *Nicotiana tabacum*, *Solanum tuberosum*, *Zea mays*, *Hordeum vulgare subsp. spontaneum*, *Triticum aestivum*, *Oryza sativa*, *Sorghum bicolor*, *Panicum virgatum*, *Setaria viridis*, *Cucumis sativus*, *Medicago truncatula*, *Physcomitrium patens*, *Solanum lycopersicum*, *Spinacia oleracea*, *Gossypium raimondii*, *Glycine max*, *Vitis vinifera*, *Chlamydomonas reinhardtii*, and 80-99% homologues with the sequence in *Populus trichocarpa*, *Synechocystis sp. PCC 6803*, *Synechococcus elongatus PCC 7942*. For more species homologues information, please contact tech support at [tech@phytoab.com](mailto:tech@phytoab.com).

### Application Example



Thy-WT: thylakoid membrane protein from WT of *Arabidopsis thaliana* containing 0.5 µg and 1 µg of chlorophyll, respectively.

Thy-*cyt b6f*: thylakoid membrane protein from a *cyt b6f* mutant of *Arabidopsis thaliana* containing 1 µg of chlorophyll.

**Electrophoresis:** 15% SDS-Urea-PAGE

**Transfer:** blotting to NC (nitrocellulose) membrane for 1 h.

**Blocking:** 5% skim milk at RT or 4°C for 1 h.

**Primary antibody:** 1:5000 dilution overnight at 4°C.

**Secondary antibody:** 1:10000 dilution using Goat Anti-Rabbit IgG H&L(HRP) (Cat# PHY6000).

**Detection:** using chemiluminescence substrate and image were captured with CCD camera.