

Anti-Ferrochelatase, C-terminal antibody

Catalog: PHY5323S

Product Information

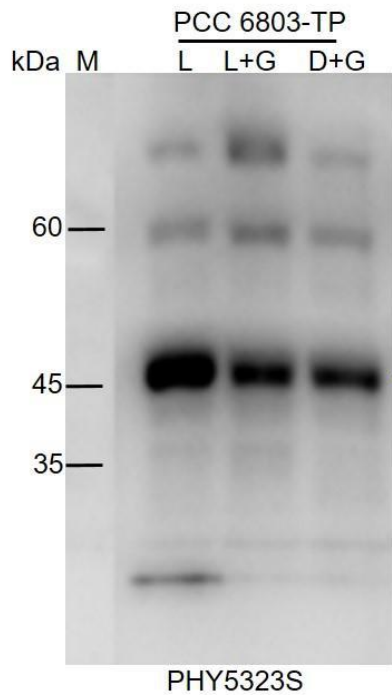
Description:	Rabbit polyclonal antibody
Background:	hemH
Synonyms:	hemH
Immunogen:	KLH-conjugated synthetic peptide (17 aa from C terminal section) derived from <i>Synechocystis sp.</i> PCC 6803 hemH (slr0839).
Form:	Lyophilized
Quantity:	150 µg
Purification:	Serum Peptide affinity form antibody available upon request at info@phytoab.com .
Reconstitution:	Reconstitution with 150 µl of sterile water. "Note: please spin tube briefly prior to opening it to avoid any losses that might occur from lyophilized material adhering to the cap or sides of the tube".
Stability & Storage:	Use a manual defrost freezer and avoid repeated freeze-thaw cycles. 12 months from date of receipt, -20 to -70°C as supplied. 6 months, -20 to -70°C under sterile conditions after reconstitution. 1 month, 2 to 8°C under sterile conditions after reconstitution.
Shipping:	The product is shipped at 4°C. Upon receipt, store it immediately at the temperature recommended above.

Application Information

Recommended Dilution:	Western Blot (1:1000-1:2000) Note: Optimal dilutions/concentrations should be determined by the end user.
Expected / apparent MW:	44 / 46 kDa
Confirmed Reactivity:	<i>Synechocystis sp.</i> PCC 6803
Predicted Reactivity:	For homologues with other species especially algae, please contact tech support at tech@phytoab.com .

Research Use Only

Application Example



PCC 6803-TP (L): 30 µg whole-cell lysate protein from WT of *Synechocystis sp.* PCC 6803 (Light without Glucose).

PCC 6803-TP (L+G): 30 µg whole-cell lysate protein from WT of *Synechocystis sp.* PCC 6803 (Light Plus Glucose).

PCC 6803-TP (D+G): 30 µg whole-cell lysate protein from WT of *Synechocystis sp.* PCC 6803 (Dark Plus Glucose).

Electrophoresis: (5-20)% Gradient gel

Transfer: blotting to NC (nitrocellulose) membrane for 1 h.

Blocking: 5% skim milk at RT or 4°C for 1 h.

Primary antibody: 1:1000 dilution overnight at 4°C.

Secondary antibody: 1:10000 dilution using Goat Anti-Rabbit IgG H&L (HRP) (Cat# PHY6000).

Detection: using chemiluminescence substrate and image were captured with CCD camera.