

# Anti-Elongation factor 1-alpha antibody

Catalog: PHY0101A

## Product Information

<b>Description:</b>	Rabbit polyclonal antibody
<b>Background:</b>	EF1A (elongation factor 1-alpha) belongs to the GTP-binding elongation factor family and is localized in the cytoplasm. This protein promotes the GTP-dependent binding of aminoacyl-tRNA to the A-site of ribosomes during protein biosynthesis.
<b>Synonyms:</b>	EF1A
<b>Immunogen:</b>	KLH-conjugated synthetic peptide (15 aa from Central section) derived from <i>Arabidopsis thaliana</i> EF1A (AT1G07940), EF1A $\alpha$ (AT5G60390), ELONGATION FACTOR-TU FAMILY (AT1G07920), AT1G07930.
<b>Form:</b>	Lyophilized
<b>Quantity:</b>	150 $\mu$ g
<b>Purification:</b>	Immunogen affinity purified
<b>Reconstitution:</b>	Reconstitution with 150 $\mu$ l of 0.01M sterile PBS. "Note: please spin tube briefly prior to opening it to avoid any losses that might occur from lyophilized material adhering to the cap or sides of the tube".
<b>Stability &amp; Storage:</b>	Use a manual defrost freezer and avoid repeated freeze-thaw cycles. 12 months from date of receipt, -20 to -70°C as supplied. 6 months, -20 to -70°C under sterile conditions after reconstitution. 1 month, 2 to 8°C under sterile conditions after reconstitution.
<b>Shipping:</b>	The product is shipped at 4°C. Upon receipt, store it immediately at the temperature recommended above.

## Application Information

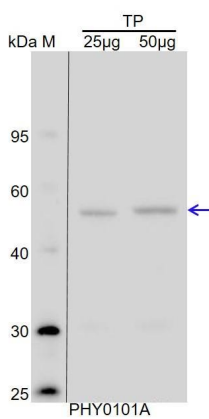
<b>Recommended Dilution:</b>	Western Blot (1:1000-1:2000) Note: Optimal dilutions/concentrations should be determined by the end user.
<b>Expected / apparent MW:</b>	50 kDa
<b>Confirmed Reactivity:</b>	<i>Arabidopsis thaliana</i>
<b>Predicted Reactivity:</b>	Among species analyzed, the sequence of the synthetic peptide

Research Use Only

used for immunization is 100% homologues with the sequence in *Brassica napus*, *Brassica rapa*, *Hordeum vulgare*, *Triticum aestivum*, *Panicum virgatum*, *Zea mays*, *Medicago truncatula*, *Setaria viridis*, *Solanum tuberosum*, *Gossypium raimondii*, *Solanum lycopersicum*, *Glycine max*, *Nicotiana tabacum*, *Oryza sativa*, *Sorghum bicolor*.

For more species homologues information, please contact tech support at [tech@phytoab.com](mailto:tech@phytoab.com).

## Application Example



TP: 25 µg and 50 µg total protein from *Arabidopsis thaliana* leaf.

**Electrophoresis:** 15% SDS-Urea-PAGE

**Transfer:** blotting to NC (nitrocellulose) membrane for 1 h.

**Blocking:** 5% skim milk at RT or 4°C for 1 h.

**Primary antibody:** 1:2000 dilution overnight at 4°C.

**Secondary antibody:** 1:20000 dilution using Goat Anti-Rabbit IgG H&L (HRP) (Cat# PHY6000).

**Detection:** using chemiluminescence substrate and image were captured with CCD camera.