

# Anti-DELLA protein GAI antibody

Catalog: PHY3624S

## Product Information

<b>Description:</b>	Rabbit polyclonal antibody
<b>Background:</b>	GAI is similar to a putative transcription factor and transcriptional coactivators. Repressor of GA responses and involved in gibberellic acid mediated signaling. Member of the DELLA proteins that restrain the cell proliferation and expansion that drives plant growth. The protein undergoes degradation in response to GA via the 26S proteasome. GAI may be involved in reducing ROS accumulation in response to stress by up-regulating the transcription of superoxide dismutases. Represses GA-induced vegetative growth and floral initiation. Rapidly degraded in response to GA.
<b>Synonyms:</b>	GAI, GIBBERELIC ACID INSENSITIVE, RESTORATION ON GROWTH ON AMMONIA 2, RGA2
<b>Immunogen:</b>	KLH-conjugated synthetic peptide (13 aa from N terminal section) derived from <i>Arabidopsis thaliana</i> GAI (AT1G14920).
<b>Form:</b>	Lyophilized
<b>Quantity:</b>	150 µg
<b>Purification:</b>	Serum Peptide affinity form antibody available upon request at <a href="mailto:info@phytoab.com">info@phytoab.com</a> .
<b>Reconstitution:</b>	Reconstitution with 150µl of sterile water. "Note: please spin tube briefly prior to opening it to avoid any losses that might occur from lyophilized material adhering to the cap or sides of the tube".
<b>Stability &amp; Storage:</b>	Use a manual defrost freezer and avoid repeated freeze-thaw cycles. 12 months from date of receipt, -20 to -70°C as supplied. 6 months, -20 to -70°C under sterile conditions after reconstitution. 1 month, 2 to 8°C under sterile conditions after reconstitution.
<b>Shipping:</b>	The product is shipped at 4°C. Upon receipt, store it immediately at the temperature recommended above.

## Application Information

<b>Recommended Dilution:</b>	Western Blot (1:1000-1:2000) Note: Optimal dilutions/concentrations should be determined by the
------------------------------	--

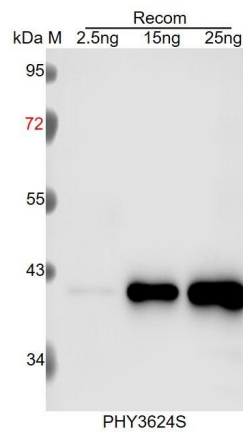
Research Use Only

end user.

**Expected / apparent MW:** 59 kDa

**Predicted Reactivity:** For more species homologues information, please contact tech support at [tech@phytoab.com](mailto:tech@phytoab.com).

## Application Example



Recom: 2.5 ng, 15 ng and 25 ng recombinant protein containing the peptide for immunization and having a molecular mass of 41 kDa.

**Electrophoresis:** 12% SDS-PAGE

**Transfer:** blotting to NC (nitrocellulose) membrane for 1 h.

**Blocking:** 5% skim milk at RT or 4°C for 1 h.

**Primary antibody:** 1:1000 dilution overnight at 4°C.

**Secondary antibody:** 1:10000 dilution using Goat Anti-Rabbit IgG H&L (HRP) (Cat# PHY6000).

**Detection:** using chemiluminescence substrate and image were captured with CCD camera.