

Anti-Photosynthetic NDH subunit of lumenal location 2, chloroplastic antibody

Catalog: PHY1007A

Product Information

Description:	Rabbit polyclonal antibody
Background:	Chloroplast NADH dehydrogenase-like (NDH) complex mediates cyclic electron transport around PSI and chlororespiration. Chloroplast NDH consists of five subcomplexes. In higher plants, NDH complex further associates with photosystem I (PSI) to form the NDH-PSI supercomplex. PQL2 is the PNSL2 (AT1G14150) subunit of the NDH complex.
Synonyms:	PnsL2, PQL2, PHOTOSYNTHETIC NDH SUBCOMPLEX L 2, PNSL2, PQL1, PSBQ-LIKE 1, PSBQ-LIKE 2.
Immunogen:	KLH-conjugated synthetic peptide (14 aa from C terminal section) derived from <i>Arabidopsis thaliana</i> PnsL2 (AT1G14150).
Form:	Lyophilized
Quantity:	150 µg
Purification:	Immunogen affinity purified
Reconstitution:	Reconstitution with 150 µl of 0.01 M sterile PBS. "Note: please spin tube briefly prior to opening it to avoid any losses that might occur from lyophilized material adhering to the cap or sides of the tube".
Stability &	Use a manual defrost freezer and avoid repeated freeze-thaw cycles.
Storage:	12 months from date of receipt, -20 to -70°C as supplied. 6 months, -20 to -70°C under sterile conditions after reconstitution. 1 month, 2 to 8°C under sterile conditions after reconstitution.
Shipping:	The product is shipped at 4°C. Upon receipt, store it immediately at the temperature recommended above.

Application Information

Recommended Dilution:	Western Blot (1:1000-1:2000) Note: Optimal dilutions/concentrations should be determined by the end user.
Expected / apparent MW:	22 / 14 kDa

Research Use Only

Confirmed Reactivity:

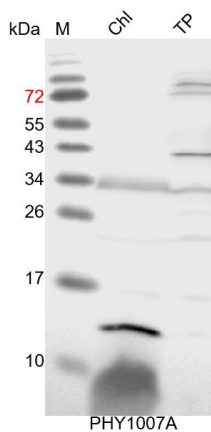
Arabidopsis thaliana

Predicted Reactivity:

Among species analyzed, the sequence of the synthetic peptide used for immunization is 80-99% homologues with the sequence in *Brassica rapa*, *Brassica napus*.

For more species homologues information, please contact tech support at tech@phytoab.com.

Application Example



Chl: 8 μ g total chloroplast protein from *Arabidopsis thaliana*.

TP: 30 μ g total protein from *Arabidopsis thaliana*.

Electrophoresis: 15% SDS-PAGE

Transfer: blotting to NC (nitrocellulose) membrane for 1 h.

Blocking: 5% skim milk at RT or 4°C for 1 h.

Primary antibody: 1:1000 dilution overnight at 4°C.

Secondary antibody: 1:10000 dilution using Goat Anti-Rabbit IgG H&L (HRP) (Cat# PHY6000)

Detection: using chemiluminescence substrate and image were captured with CCD camera.