

Anti-Small basic intrinsic protein 2-1, C-terminal antibody

Catalog: PHY0190A

Product Information

Description:	Rabbit polyclonal antibody
Background:	SIP2 is one of the Major Intrinsic Proteins (MIPs) which facilitate the passive transport of small molecules across membranes. It belongs to a family of plant aquaporins.
Synonyms:	SIP2, SIP2;1, SMALL AND BASIC INTRINSIC PROTEIN 2, SMALL AND BASIC INTRINSIC PROTEIN 2;1
Immunogen:	KLH-conjugated synthetic peptide (15 aa from C terminal section) derived from <i>Arabidopsis thaliana</i> SIP2 (AT3G56950).
Form:	Lyophilized
Quantity:	150 µg
Purification:	Immunogen affinity purified
Reconstitution:	Reconstitution with 150 µl of 0.01M sterile PBS. "Note: please spin tube briefly prior to opening it to avoid any losses that might occur from lyophilized material adhering to the cap or sides of the tube".
Stability &Storage:	Use a manual defrost freezer and avoid repeated freeze-thaw cycles. 12 months from date of receipt, -20 to -70°C as supplied. 6 months, -20 to -70°C under sterile conditions after reconstitution. 1 month, 2 to 8°C under sterile conditions after reconstitution.
Shipping:	The product is shipped at 4°C. Upon receipt, store it immediately at the temperature recommended above.

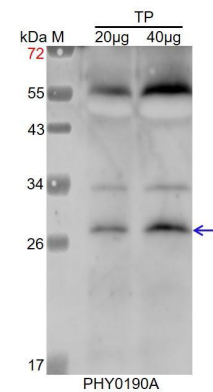
Application Information

Recommended Dilution:	Western Blot (1:1000-1:2000) Note: Optimal dilutions/concentrations should be determined by the end user.
Expected / apparent MW:	29 kDa
Confirmed Reactivity:	<i>Arabidopsis thaliana</i>
Predicted Reactivity:	Among species analyzed, the sequence of the synthetic peptide used for immunization is 100% homologues with the sequence in <i>Brassica</i>

Research Use Only

napus, and 80-99% homologues with the sequence in *Brassica rapa*.
For more species homologues information, please contact tech support at tech@phytoab.com.

Application Example



TP: 20 µg and 40 µg total protein from *Arabidopsis thaliana*, respectively.

Electrophoresis: 15% SDS-PAGE

Transfer: blotting to NC (nitrocellulose) membrane for 1 h.

Blocking: 5% skim milk at RT or 4°C for 1 h.

Primary antibody: 1:2000 dilution overnight at 4°C.

Secondary antibody: 1:10000 dilution using Goat Anti-Rabbit IgG H&L (HRP)
(Cat# PHY6000)

Detection: using chemiluminescence substrate and image were captured with CCD

camera.