

# Anti-Protoporphyrinogen oxidase 1, chloroplastic antibody

Catalog: PHY2269S

## Product Information

<b>Description:</b>	Rabbit polyclonal antibody
<b>Background:</b>	Protoporphyrinogen IX oxidase1 (PPO1) catalyzes the oxidation of protoporphyrinogen IX to form protoporphyrin IX in the plastid tetrapyrrole biosynthesis pathway and is also essential for plastid RNA editing in <i>Arabidopsis thaliana</i> .
<b>Synonyms:</b>	PPOX, PPOX1, HEMG1, PPO1
<b>Immunogen:</b>	Recombinant protein of PPOX (77-462 aa) derived from <i>Arabidopsis thaliana</i> AT4G01690.
<b>Form:</b>	Lyophilized
<b>Quantity:</b>	150 µg
<b>Purification:</b>	Serum
<b>Reconstitution:</b>	Reconstitution with 150µl of sterile water. "Note: please spin tube briefly prior to opening it to avoid any losses that might occur from lyophilized material adhering to the cap or sides of the tube".
<b>Stability &amp; Storage:</b>	Use a manual defrost freezer and avoid repeated freeze-thaw cycles. 12 months from date of receipt, -20 to -70°C as supplied. 6 months, -20 to -70°C under sterile conditions after reconstitution. 1 month, 2 to 8°C under sterile conditions after reconstitution.
<b>Shipping:</b>	The product is shipped at 4°C. Upon receipt, store it immediately at the temperature recommended above.

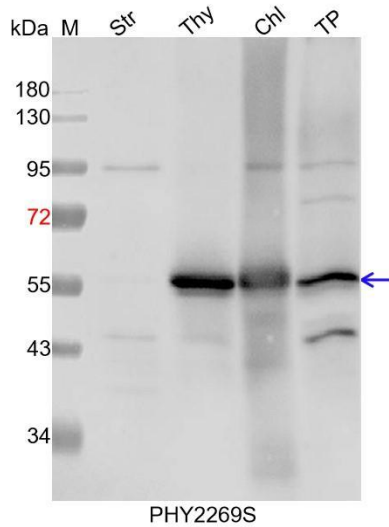
## Application Information

<b>Recommended Dilution:</b>	Western Blot (1:1000-1:2000) Note: Optimal dilutions/concentrations should be determined by the end user.
<b>Expected / apparent MW:</b>	58 kDa
<b>Confirmed Reactivity:</b>	<i>Arabidopsis thaliana</i>
<b>Predicted Reactivity:</b>	For more species homologues information, please contact tech

Research Use Only

support at [tech@phytoab.com](mailto:tech@phytoab.com).

## Application Example



captured with CCD camera.

Str: 12 µg stromal protein from *Arabidopsis thaliana*.

Thy: thylakoid membrane protein from *Arabidopsis thaliana* containing 5 µg of chlorophyll.

Chl: 10 µl total chloroplast protein from *Arabidopsis thaliana*.

TP: 18 µg total protein from *Arabidopsis thaliana*.

**Electrophoresis:** 12% SDS-PAGE

**Transfer:** blotting to NC (nitrocellulose) membrane for 1 h.

**Blocking:** 5% skim milk at RT or 4°C for 1 h.

**Primary antibody:** 1:1000 dilution overnight at 4°C.

**Secondary antibody:** 1:10000 dilution using Goat Anti-Rabbit IgG

H&L (HRP) (Cat# PHY6000)

**Detection:** using chemiluminescence substrate and image were