

Anti-D2 subunit of Photosystem II, C-terminal antibody

Catalog: PHY0060

Product Information

Description:	Rabbit polyclonal antibody
Background:	The D1/D2 (PsbA/PsbD) reaction center heterodimer binds P680, the primary electron donor of PSII as well as several subsequent electron acceptors. D2 is needed for assembly of a stable PSII complex.
Synonyms:	PsbD
Immunogen:	KLH-conjugated synthetic peptide (15 aa from C terminal section) derived from <i>Arabidopsis thaliana</i> D2 (ATCG00270).
Form:	Lyophilized
Quantity:	150 µg
Purification:	Protein A purified
Reconstitution:	Reconstitution with 150 µl of 0.01M sterile PBS. "Note: please spin tube briefly prior to opening it to avoid any losses that might occur from lyophilized material adhering to the cap or sides of the tube".
Stability & Storage:	Use a manual defrost freezer and avoid repeated freeze-thaw cycles. 12 months from date of receipt, -20 to -70°C as supplied. 6 months, -20 to -70°C under sterile conditions after reconstitution. 1 month, 2 to 8°C under sterile conditions after reconstitution.
Shipping:	The product is shipped at 4°C. Upon receipt, store it immediately at the temperature recommended above.

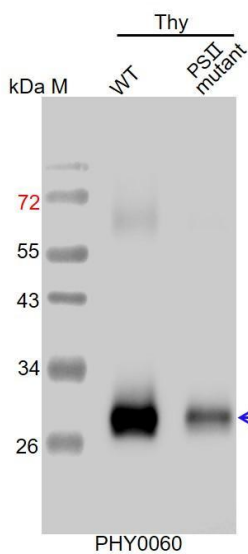
Application Information

Recommended Dilution:	Western Blot (1:1000-1:2000) Note: Optimal dilutions/concentrations should be determined by the end user.
Expected / apparent MW:	40 / 30 kDa
Confirmed Reactivity:	<i>Arabidopsis thaliana</i>
Predicted Reactivity:	Among species analyzed, the sequence of the synthetic peptide used for immunization is 100% homologues with the sequence in <i>Glycine max</i> , <i>Solanum tuberosum</i> , <i>Brassica napus</i> , <i>Medicago truncatula</i> , <i>Brassica rapa</i> , <i>Oryza sativa</i> , <i>Triticum aestivum</i> , <i>Sorghum bicolor</i> ,

Research Use Only

Cucumis sativus, *Vitis vinifera*, *Hordeum vulgare*, *Physcomitrium patens*, *Nicotiana tabacum*, *Populus trichocarpa*, *Spinacia oleracea*, *Setaria viridis*, *Zea mays*, *Solanum lycopersicum*, *Chlamydomonas reinhardtii*, *Physcomitrium patens*, *Panicum virgatum*, *Gossypium raimondii*, and 80-99% homologues with the sequence in *Synechocystis sp.* PCC 6803, *Synechococcus elongatus* PCC 7942. For more species homologues information, please contact tech support at tech@phytoab.com.

Application Example



Thy-WT: thylakoid membrane protein from WT of *Arabidopsis thaliana* containing 0.25 µg of chlorophyll.

Thy-PS II mutant: thylakoid membrane protein from an *Arabidopsis* mutant with low accumulation of PS II containing 0.25 µg of chlorophyll.

Electrophoresis: 15% SDS- PAGE

Transfer: blotting to NC (nitrocellulose) membrane for 1 h.

Blocking: 5% skim milk at RT or 4°C for 1 h.

Primary antibody: 1:2000 dilution overnight at 4°C.

Secondary antibody: 1:10000 dilution using Goat Anti-Rabbit IgG H&L (HRP) (Cat# PHY6000)

Detection: using chemiluminescence substrate and image were captured with CCD camera.