

# Anti-CP43 subunit of Photosystem II, E-loop antibody

Catalog: PHY3789S

## Product Information

<b>Description:</b>	Rabbit polyclonal antibody
<b>Background:</b>	CP43 is a component of the proximal antenna of PSII and contains six transmembrane alpha helices and five hydrophilic loops that connect the membrane-spanning domains. CP43 is encoded by the <i>psbC</i> gene (ATCG00280).
<b>Synonyms:</b>	PsbC
<b>Immunogen:</b>	KLH-conjugated synthetic peptide (17 aa from C terminal section) derived from <i>Arabidopsis thaliana</i> PsbC (ATCG00280).
<b>Form:</b>	Lyophilized
<b>Quantity:</b>	150 µg
<b>Purification:</b>	Serum Peptide affinity form antibody available upon request at <a href="mailto:info@phytoab.com">info@phytoab.com</a> .
<b>Reconstitution:</b>	Reconstitution with 150 µl of sterile water. "Note: please spin tube briefly prior to opening it to avoid any losses that might occur from lyophilized material adhering to the cap or sides of the tube".
<b>Stability &amp; Storage:</b>	Use a manual defrost freezer and avoid repeated freeze-thaw cycles. 12 months from date of receipt, -20 to -70°C as supplied. 6 months, -20 to -70°C under sterile conditions after reconstitution. 1 month, 2 to 8°C under sterile conditions after reconstitution.
<b>Shipping:</b>	The product is shipped at 4°C. Upon receipt, store it immediately at the temperature recommended above.

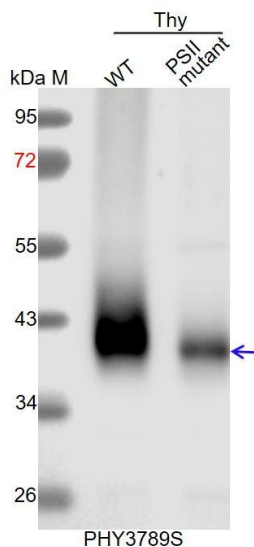
## Application Information

<b>Recommended Dilution:</b>	Western Blot (1:1000-1: 2000) Note: Optimal dilutions/concentrations should be determined by the end user.
<b>Expected / apparent MW:</b>	52 / 40 kDa
<b>Confirmed Reactivity:</b>	<i>Arabidopsis thaliana</i>
<b>Predicted Reactivity:</b>	Among species analyzed , the sequence of the synthetic peptide

Research Use Only

used for immunization is 100% homologues with the sequence in *Brassica napus*, *Medicago truncatula*, *Glycine max*, *Solanum tuberosum*, *Sorghum bicolor*, *Triticum aestivum*, *Zea mays*, *Vitis vinifera*, *Nicotiana tabacum*, *Oryza sativa*, *Setaria viridis*, *Cucumis sativus*, *Solanum lycopersicum*, *Spinacia oleracea*, *Leymus chinensis*, *Panicum virgatum*, *Gossypium raimondii*, *Populus trichocarpa*, *Hordeum vulgare*, and 80-99% homologues with the sequence in *Physcomitrella patens*, *Chlamydomonas reinhardtii*. For more species homologues information, please contact tech support at [tech@phytoab.com](mailto:tech@phytoab.com).

## Application Example



**Thy-WT:** thylakoid membrane protein from WT of *Arabidopsis thaliana* containing 0.25  $\mu$ g of chlorophyll.

**Thy-PS II mutant:** thylakoid membrane protein from an *Arabidopsis* mutant with low accumulation of PS II containing 0.25  $\mu$ g of chlorophyll.

**Electrophoresis:** 15% SDS- PAGE

**Transfer:** blotting to NC (nitrocellulose) membrane for 1 h.

**Blocking:** 5% skim milk at RT or 4°C for 1 h.

**Primary antibody:** 1:2000 dilution overnight at 4°C.

**Secondary antibody:** 1:10000 dilution using Goat Anti-Rabbit IgG H&L (HRP) (Cat# PHY6000)

**Detection:** using chemiluminescence substrate and image were captured with CCD camera.