

Anti-NAD(P)H-quinone oxidoreductase subunit K, chloroplastic antibody

Catalog: PHY3437S

Product Information

Description:	Rabbit polyclonal antibody
Background:	PSBG is a protein which was originally thought to be part of photosystem II.
Synonyms:	PSBG, NDHK, PHOTOSYSTEM II REACTION CENTER PROTEIN G
Immunogen:	KLH-conjugated synthetic peptide (17 aa from N terminal section) derived from <i>Arabidopsis thaliana</i> PSBG (ATCG00430).
Form:	Lyophilized
Quantity:	150 µg
Purification:	Serum Peptide affinity form antibody available upon request at info@phytoab.com .
Reconstitution:	Reconstitution with 150 µl of sterile water. "Note: please spin tube briefly prior to opening it to avoid any losses that might occur from lyophilized material adhering to the cap or sides of the tube".
Stability & Storage:	Use a manual defrost freezer and avoid repeated freeze-thaw cycles. 12 months from date of receipt, -20 to -70°C as supplied. 6 months, -20 to -70°C under sterile conditions after reconstitution. 1 month, 2 to 8°C under sterile conditions after reconstitution.
Shipping:	The product is shipped at 4°C. Upon receipt, store it immediately at the temperature recommended above.

Application Information

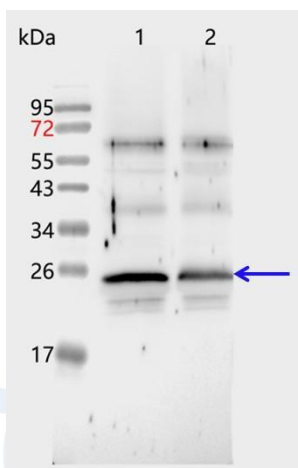
Recommended Dilution:	Western Blot (1:1000-1:2000) Note: Optimal dilutions/concentrations should be determined by the end user.
Expected/apparent MW:	25 kDa
Confirmed Reactivity:	<i>Arabidopsis thaliana</i>
Predicted Reactivity:	Among species analyzed, the sequence of the synthetic peptide used for immunization is 100% homologues with the sequence in <i>Zea mays</i> , <i>Oryza sativa</i> , <i>Medicago truncatula</i> , <i>Solanum tuberosum</i> ,

Research Use Only

Nicotiana tabacum, *Solanum lycopersicum*, *Vitis vinifera*,
Physcomitrium patens, *Triticum aestivum*, *Hordeum vulgare*,
Panicum virgatum, *Setaria viridis*, *Leymus chinensis*, *Sorghum*
bicolor, *Cucumis sativus*, *Populus trichocarpa*, *Gossypium raimondii*,
Brassica napus, *Glycine max*, and 80-99% homologues with the
sequence in *Spinacia oleracea*.

For more species homologues information, please contact tech support at tech@phytoab.com.

Application Example



PHY3437S

Lane 1: 4 µg thylakoid membrane protein from *Arabidopsis thaliana*.

Lane 2: 4 µg thylakoid membrane protein from NDH mutant of *Arabidopsis thaliana*.

Electrophoresis: 15% SDS-PAGE

Transfer: blotting to NC (nitrocellulose) membrane for 1 h.

Blocking: 5% skim milk at RT or 4°C for 1 h.

Primary antibody: 1:2000 dilution overnight at 4°C.

Secondary antibody: 1:10000 dilution using Goat Anti-Rabbit IgG H&L(HRP) (Cat# PHY6000).

Detection: using chemiluminescence substrate and image were captured with CCD camera.