

Anti-High chlorophyll fluorescence phenotype protein, C-terminal antibody

Catalog: PHY0133S

Product Information

| | |
|---------------------------------|---|
| Description: | Rabbit polyclonal antibody |
| Background: | Chloroplast protein HCF101 (high chlorophyll fluorescence 101) serves as a chloroplast scaffold protein that specifically assembles [4Fe-4S] clusters and transfers them to the chloroplast membrane and soluble target proteins. |
| Synonyms: | Hcf101, HIGH-CHLOROPHYLL-FLUORESCENCE 101 |
| Immunogen: | KLH-conjugated synthetic peptide (15 aa from C terminal section) derived from <i>Arabidopsis thaliana</i> Hcf101 (AT3G24430). |
| Form: | Lyophilized |
| Quantity: | 150 µg |
| Purification: | Serum Peptide affinity form antibody available upon request at info@phytoab.com . |
| Reconstitution: | Reconstitution with 150 µl of sterile water. "Note: please spin tube briefly prior to opening it to avoid any losses that might occur from lyophilized material adhering to the cap or sides of the tube". |
| Stability & Storage: | Use a manual defrost freezer and avoid repeated freeze-thaw cycles. 12 months from date of receipt, -20 to -70°C as supplied. 6 months, -20 to -70°C under sterile conditions after reconstitution. 1 month, 2 to 8°C under sterile conditions after reconstitution. |
| Shipping: | The product is shipped at 4°C. Upon receipt, store it immediately at the temperature recommended above. |

Application Information

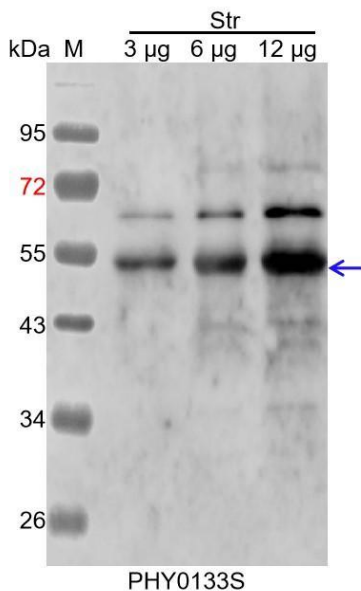
| | |
|--------------------------------|--|
| Recommended Dilution: | Western Blot (1:1000-1:2000) Note: Optimal dilutions/concentrations should be determined by the end user. |
| Expected / apparent MW: | 58 / 54 kDa |
| Confirmed Reactivity: | <i>Arabidopsis thaliana</i> |
| Predicted Reactivity: | Among species analyzed, the sequence of the synthetic peptide used |

Research Use Only

for immunization is 100% homologues with the sequence in *Vitis vinifera*, *Panicum virgatum*, *Triticum aestivum*, *Brassica napus*, *Sorghum bicolor*, *Hordeum vulgare subsp. vulgare*, *Medicago truncatula*, *Setaria viridis*, *Brassica rapa*, *Gossypium raimondii*, *Oryza sativa*, *Glycine max*, *Zea mays*, *Cucumis sativus*, *Populus trichocarpa*, *Nicotiana tabacum*, *Spinacia oleracea*, and 80-99% homologues with the sequence in *Solanum tuberosum*, *Solanum lycopersicum*, *Physcomitrium patens*.

For more species homologues information, please contact tech support at tech@phytoab.com.

Application Example



Str: 3 µg, 6 µg and 12 µg stromal protein from *Arabidopsis thaliana*, respectively.

Electrophoresis: 12% SDS-Urea-PAGE

Transfer: blotting to NC (nitrocellulose) membrane for 1 h.

Blocking: 5% skim milk at RT or 4°C for 1 h.

Primary antibody: 1:1000 dilution overnight at 4°C.

Secondary antibody: 1:10000 dilution using Goat Anti-Rabbit IgG H&L(HRP) (Cat# PHY6000)

Detection: using chemiluminescence substrate and image were captured with CCD camera.