

Anti-Os03g0333400 antibody

Catalog: PHY4295S

Product Information

Description:	Rabbit polyclonal antibody
Background:	Os03g0333400
Synonyms:	Os03g0333400
Immunogen:	KLH-conjugated synthetic peptide (15 aa from Central section) derived from <i>Oryza sativa</i> Os03g0333400.
Form:	Lyophilized
Quantity:	150 µg
Purification:	Serum Peptide affinity form antibody available upon request at info@phytoab.com .
Reconstitution:	Reconstitution with 150µl of sterile water. "Note: please spin tube briefly prior to opening it to avoid any losses that might occur from lyophilized material adhering to the cap or sides of the tube".
Stability & Storage:	Use a manual defrost freezer and avoid repeated freeze-thaw cycles. 12 months from date of receipt, -20 to -70°C as supplied. 6 months, -20 to -70°C under sterile conditions after reconstitution. 1 month, 2 to 8°C under sterile conditions after reconstitution.
Shipping:	The product is shipped at 4°C. Upon receipt, store it immediately at the temperature recommended above.

Application Information

Recommended Dilution:	Western Blot (1:1000-1:2000) Note: Optimal dilutions/concentrations should be determined by the end user.
Expected / apparent MW:	18 / 13 kDa
Confirmed Reactivity:	<i>Oryza sativa</i>
Predicted Reactivity:	Among species analyzed, the sequence of the synthetic peptide used for immunization is 100% homologues with the sequence in <i>Panicum virgatum</i> , <i>Setaria viridis</i> , <i>Sorghum bicolor</i> , <i>Zea mays</i> , and 80-99% homologues with the sequence in <i>Glycine max</i> , <i>Vitis vinifera</i> , <i>Populus</i>

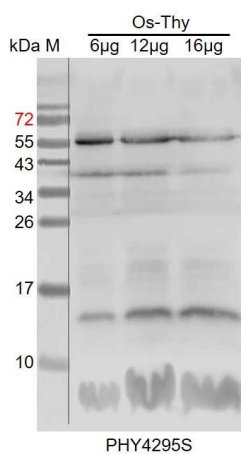
Research Use Only

trichocarpa, Gossypium raimondii, Hordeum vulgare, Triticum aestivum, Medicago truncatula, Brassica rapa, Brassica napus, Arabidopsis thaliana, Nicotiana tabacum, Solanum tuberosum, Solanum lycopersicum, Spinacia oleracea, Cucumis sativus.

For more species homologues information, please contact tech support at tech@phytoab.com.

Application Example

Example1:



Os-Thy is thylakoid membrane protein from *Oryza sativa* leaf containing 6 µg, 12 µg and 16 µg of chlorophyll, respectively.

Electrophoresis: 15% SDS-PAGE

Transfer: blotting to NC (nitrocellulose) membrane for 1 h.

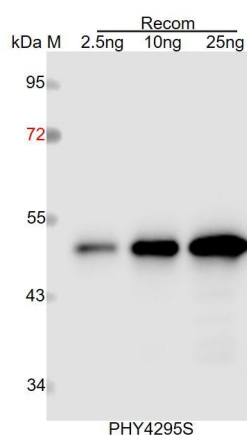
Blocking: 5% skim milk at RT or 4°C for 1 h.

Primary antibody: 1:1000 dilution overnight at 4°C.

← **Secondary antibody:** 1:10000 dilution using Goat Anti-Rabbit IgG H&L (HRP) (Cat# PHY6000).

Detection: using chemiluminescence substrate and image were captured with CCD camera.

Example2:



Recom: 2.5 ng, 10 ng and 25 ng recombinant protein containing the peptide for immunization and having a molecular mass of 52 kDa.

Electrophoresis: 12% SDS-PAGE

Transfer: blotting to NC (nitrocellulose) membrane for 1 h.

Blocking: 5% skim milk at RT or 4°C for 1 h.

← **Primary antibody:** 1:1000 dilution overnight at 4°C.

Secondary antibody: 1:10000 dilution using Goat Anti-Rabbit IgG H&L (HRP) (Cat# PHY6000).

Detection: using chemiluminescence substrate and image were captured with CCD camera.