

# Anti-MADS-box transcription factor 25 antibody

Catalog: PHY4215S

## Product Information

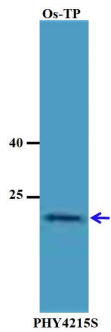
<b>Description:</b>	Rabbit polyclonal antibody
<b>Background:</b>	Similar to MADS-box protein AGL16-II. (Os04t0304400-01)
<b>Synonyms:</b>	OsMADS25
<b>Immunogen:</b>	KLH-conjugated synthetic peptide (14 aa from N terminal section) derived from <i>Oryza sativa</i> OsMADS25 (Os04g0304400).
<b>Form:</b>	Lyophilized
<b>Quantity:</b>	50 µg
<b>Purification:</b>	Serum
<b>Reconstitution:</b>	Reconstitution with 50µl of sterile water. "Note: please spin tube briefly prior to opening it to avoid any losses that might occur from lyophilized material adhering to the cap or sides of the tube".
<b>Stability &amp; Storage:</b>	Use a manual defrost freezer and avoid repeated freeze-thaw cycles. 12 months from date of receipt, -20 to -70°C as supplied. 6 months, -20 to -70°C under sterile conditions after reconstitution. 1 month, 2 to 8°C under sterile conditions after reconstitution.
<b>Shipping:</b>	The product is shipped at 4°C. Upon receipt, store it immediately at the temperature recommended above.

## Application Information

<b>Recommended Dilution:</b>	Western Blot (1:100-1:500) Note: Optimal dilutions/concentrations should be determined by the end user.
<b>Expected / apparent MW:</b>	26 kDa
<b>Confirmed Reactivity:</b>	<i>Oryza sativa</i>
<b>Predicted Reactivity:</b>	For more species homologues information, please contact tech support at <a href="mailto:tech@phytoab.com">tech@phytoab.com</a> .

Research Use Only

## Application Example



Os-TP: total protein from *Oryza sativa*.

**Primary antibody:** 1:500 dilution overnight at 4°C.

**Secondary antibody:** 1:10000 dilution using Goat Anti-Rabbit IgG H&L(HRP) (Cat# PHY6000).

**Detection:** using chemiluminescence substrate and image were captured with CCD camera.