

Anti-Ubiquinol-cytochrome c oxidoreductase subunit CYC1, mitochondrial antibody

Catalog: PHY0566A

Product Information

Description:	Rabbit polyclonal antibody
Background:	Mitochondrial ubiquinol-cytochrome c oxidoreductase is also called complex III and it accepts electron from quinol and transferred to cytochrome c. In <i>Arabidopsis</i> mitochondria, ubiquinol-cytochrome c oxidoreductase contains 10 subunits. CYC1 (AT5G40810/AT3G27240) is one of the subunit of Complex III.
Synonyms:	CYC1
Immunogen:	KLH-conjugated synthetic peptide (15 aa from Central section) derived from <i>Arabidopsis thaliana</i> CYC1-1 (AT3G27240) and CYC1-2 (AT5G40810).
Form:	Lyophilized
Quantity:	150 µg
Purification:	Immunogen affinity purified
Reconstitution:	Reconstitution with 150 µl of 0.01 M sterile PBS. "Note: please spin tube briefly prior to opening it to avoid any losses that might occur from lyophilized material adhering to the cap or sides of the tube".
Stability & Storage:	Use a manual defrost freezer and avoid repeated freeze-thaw cycles. 12 months from date of receipt, -20 to -70°C as supplied. 6 months, -20 to -70°C under sterile conditions after reconstitution. 1 month, 2 to 8°C under sterile conditions after reconstitution.
Shipping:	The product is shipped at 4°C. Upon receipt, store it immediately at the temperature recommended above.

Application Information

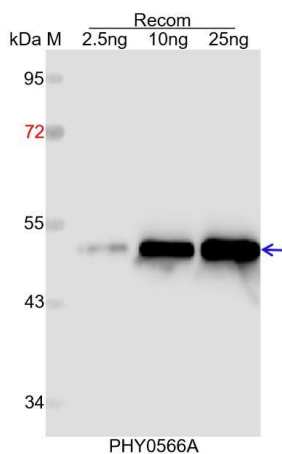
Recommended Dilution:	Western Blot (1:1000-1:2000) Note: Optimal dilutions/concentrations should be determined by the end user.
Expected / apparent MW:	34 kDa
Predicted Reactivity:	Among species analyzed, the sequence of the synthetic peptide used for immunization is 100% homologues with the sequence in <i>Zea</i>

Research Use Only

mays, *Medicago truncatula*, *Brassica napus*, *Brassica rapa*, *Gossypium raimondii*, *Nicotiana tabacum*, *Panicum virgatum*, *Vitis vinifera*, *Solanum tuberosum*, *Solanum lycopersicum*, *Triticum aestivum*, *Oryza sativa*, *Populus trichocarpa*, *Glycine max*, *Cucumis sativus*, *Sorghum bicolor*, *Hordeum vulgare*, *Setaria viridis*, and 80-99% homologues with the sequence in *Spinacia oleracea*, *Physcomitrium patens*, *Chlamydomonas reinhardtii*.

For more species homologues information, please contact tech support at tech@phytoab.com.

Application Example:



Recom: 2.5 ng, 10 ng and 25 ng recombinant protein containing the peptide for immunization and having a molecular mass of 52 kDa.

Electrophoresis: 12% SDS-PAGE

Transfer: blotting to NC (nitrocellulose) membrane for 1 h.

Blocking: 5% skim milk at RT or 4°C for 1 h.

Primary antibody: 1:1000 dilution overnight at 4°C.

Secondary antibody: 1:10000 dilution using Goat Anti-Rabbit IgG H&L (HRP) (Cat# PHY6000).

Detection: using chemiluminescence substrate and image were captured with CCD camera.