

Anti-Protein NAP1, N-terminal antibody

Catalog: PHY1836S

Product Information

Description:	Rabbit polyclonal antibody
Background:	NAP1 is a component of the WAVE protein complex which act as activators of ARP2/3 complex involved in actin nucleation. Required for trichome morphogenesis. Mutant displays distorted trichomes, a phenotype that can be phenocopied by treatment of WT plants with actin-interacting drugs. Its ER localization is independent of upstream SPK1 activation signaling and the physical association with the WAVE/SCAR Regulatory complex binding partner SRA1. ER-localized NAP1 has little colocalization with actin and represent the inactive pool of NAP1 in these cell types.
Synonyms:	NAP1, GNARLED, GRL, LPL3, NAPP, NCK-ASSOCIATED PROTEIN 1
Immunogen:	KLH-conjugated synthetic peptide (13 aa from N terminal section) derived from <i>Arabidopsis thaliana</i> NAP1 (AT2G35110).
Form:	Lyophilized
Quantity:	150 µg
Purification:	Serum Peptide affinity form antibody available upon request at info@phytoab.com .
Reconstitution:	Reconstitution with 150µl of sterile water. "Note: please spin tube briefly prior to opening it to avoid any losses that might occur from lyophilized material adhering to the cap or sides of the tube".
Stability & Storage:	Use a manual defrost freezer and avoid repeated freeze-thaw cycles. 12 months from date of receipt, -20 to -70°C as supplied. 6 months, -20 to -70°C under sterile conditions after reconstitution. 1 month, 2 to 8°C under sterile conditions after reconstitution.
Shipping:	The product is shipped at 4°C. Upon receipt, store it immediately at the temperature recommended above.

Application Information

Recommended Dilution:	Western Blot (1:1000-1:2000) Note: Optimal dilutions/concentrations should be determined by the end user.
------------------------------	--

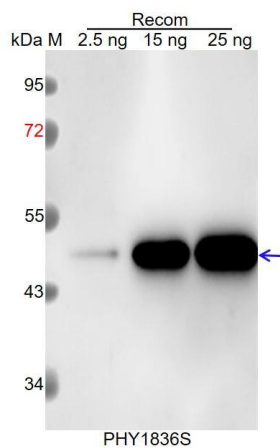
Research Use Only

Expected / apparent MW: 159 kDa

Predicted Reactivity: Among species analyzed, the sequence of the synthetic peptide used for immunization is 100% homologues with the sequence in *Brassica napus*, *Brassica rapa*.

For more species homologues information, please contact tech support at tech@phytoab.com.

Application Example:



Recom: 2.5 ng, 15 ng and 25 ng recombinant protein containing the peptide for immunization and having a molecular mass of 50 kDa.

Electrophoresis: 12% SDS-PAGE

Transfer: blotting to NC (nitrocellulose) membrane for 1 h.

Blocking: 5% skim milk at RT or 4°C for 1 h.

Primary antibody: 1:1000 dilution overnight at 4°C.

Secondary antibody: 1:10000 dilution using Goat Anti-Rabbit IgG H&L (HRP) (Cat# PHY6000).

Detection: using chemiluminescence substrate and image were captured with CCD camera.