

Anti-NAD(P)H-quinone oxidoreductase subunit 1, chloroplastic antibody

Catalog: PHY2023A

Product Information

Description:	Rabbit polyclonal antibody
Background:	NDHA is involved in aerobic respiration and contributes to NADH dehydrogenase activity. It is located in chloroplast.
Synonyms:	NDHA
Immunogen:	KLH-conjugated synthetic peptide (19 aa from C terminal section) derived from <i>Arabidopsis thaliana</i> NDHA (ATCG01100).
Form:	Lyophilized
Quantity:	150 µg
Purification:	Immunogen affinity purified
Reconstitution:	Reconstitution with 150 µl of 0.01 M sterile PBS. "Note: please spin tube briefly prior to opening it to avoid any losses that might occur from lyophilized material adhering to the cap or sides of the tube".
Stability & Storage:	Use a manual defrost freezer and avoid repeated freeze-thaw cycles. 12 months from date of receipt, -20 to -70°C as supplied. 6 months, -20 to -70°C under sterile conditions after reconstitution. 1 month, 2 to 8°C under sterile conditions after reconstitution.
Shipping:	The product is shipped at 4°C. Upon receipt, store it immediately at the temperature recommended above.

Application Information

Recommended Dilution:	Western Blot (1:1000-1:2000) Note: Optimal dilutions/concentrations should be determined by the end user.
Expected / apparent MW:	40 / 27 kDa
Confirmed Reactivity:	<i>Arabidopsis thaliana</i>
Predicted Reactivity:	Among species analyzed, the sequence of the synthetic peptide used for immunization is 100% homologues with the sequence in <i>Brassica napus</i> , <i>Brassica rapa</i> , and 80-99% homologues with the sequence in

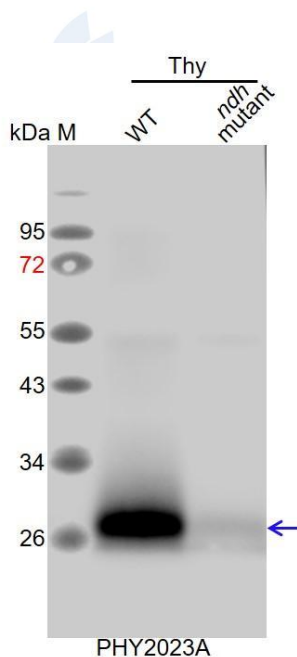
Research Use Only

Hordeum vulgare, *Medicago truncatula*, *Synechococcus elongatus* PCC 7942, *Synechocystis* sp. PCC 6803, *Physcomitrium patens*, *Solanum tuberosum*, *Nicotiana tabacum*, *Populus trichocarpa*, *Spinacia oleracea*, *Cucumis sativus*, *Vitis vinifera*, *Glycine max*, *Zea mays*, *Solanum lycopersicum*, *Gossypium raimondii*, *Oryza sativa*, *Triticum aestivum*, *Leymus chinensis*, *Sorghum bicolor*, *Panicum virgatum*, *Setaria viridis*.

For more species homologues information, please contact tech support at tech@phytoab.com.

Application Example

Example1:



Thy-WT: thylakoid membrane protein from WT of *Arabidopsis thaliana* containing 2 μ g of chlorophyll.

Thy-*ndh*: thylakoid membrane protein from an *ndh* mutant of *Arabidopsis thaliana* containing 2 μ g of chlorophyll.

Electrophoresis: 15% SDS-PAGE

Transfer: blotting to NC (nitrocellulose) membrane for 1 h.

Blocking: 5% skim milk at RT or 4°C for 1 h.

Primary antibody: 1:2000 dilution overnight at 4°C.

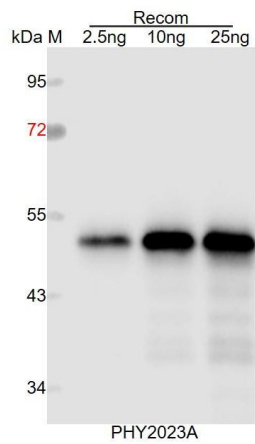
Secondary antibody: 1:10000 dilution using Goat Anti-Rabbit IgG

H&L(HRP)

(Cat# PHY6000).

Detection: using chemiluminescence substrate and image were captured with CCD camera.

Example2:



Recom: 2.5 ng, 10 ng and 25 ng recombinant protein containing the peptide for immunization and having a molecular mass of 52 kDa.

Electrophoresis: 12% SDS-PAGE

Transfer: blotting to NC (nitrocellulose) membrane for 1 h.

Blocking: 5% skim milk at RT or 4°C for 1 h.

Primary antibody: 1:1000 dilution overnight at 4°C.

Secondary antibody: 1:10000 dilution using Goat Anti-Rabbit IgG H&L (HRP) (Cat# PHY6000).

Detection: using chemiluminescence substrate and image were captured with CCD camera.