

Anti-WRKY67 antibody

Catalog: PHY4294S

Product Information

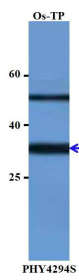
Description:	Rabbit polyclonal antibody
Background:	Similar to WRKY transcription factor 16 (Fragment). (Os05t0183100-01)
Synonyms:	WRKY67 /OsWRKY67
Immunogen:	KLH-conjugated synthetic peptide (16 aa from N terminal section) derived from <i>Oryza sativa</i> WRKY67 (Os05g0183100).
Form:	Lyophilized
Quantity:	50 µg
Purification:	Serum
Reconstitution:	Reconstitution with 50µl of sterile water. "Note: please spin tube briefly prior to opening it to avoid any losses that might occur from lyophilized material adhering to the cap or sides of the tube".
Stability & Storage:	Use a manual defrost freezer and avoid repeated freeze-thaw cycles. 12 months from date of receipt, -20 to -70°C as supplied. 6 months, -20 to -70°C under sterile conditions after reconstitution. 1 month, 2 to 8°C under sterile conditions after reconstitution.
Shipping:	The product is shipped at 4°C. Upon receipt, store it immediately at the temperature recommended above.

Application Information

Recommended Dilution:	Western Blot (1:800-1:1000) Note: Optimal dilutions/concentrations should be determined by the end user.
Expected / apparent MW:	21 kDa
Confirmed Reactivity:	<i>Oryza sativa</i>
Predicted Reactivity:	Among species analyzed, the sequence of the synthetic peptide used for immunization is 100% homologues with the sequence in <i>Hordeum vulgare</i> . For more species homologues information, please contact tech support at tech@phytoab.com .

Research Use Only

Application Example



Os-TP: total protein from *Oryza sativa*.

Primary antibody: 1:800 dilution overnight at 4°C.

Secondary antibody: 1:10000 dilution using Goat Anti-Rabbit IgG H&L(HRP) (Cat# PHY6000).

Detection: using chemiluminescence substrate and image were captured with CCD camera.