

Anti-Photosystem I P700 chlorophyll a apoprotein A2, N-terminal antibody

Catalog: PHY5276S

Product Information

Description:	Rabbit polyclonal antibody
Background:	PsaB
Synonyms:	PsaB
Immunogen:	KLH-conjugated synthetic peptide (12 aa from N terminal section) derived from <i>Synechocystis sp.</i> PCC 6803 PsaB (slr1835).
Form:	Lyophilized
Quantity:	150 µg
Purification:	Serum Peptide affinity form antibody available upon request at info@phytoab.com .
Reconstitution:	Reconstitution with 150 µl of sterile water. "Note: please spin tube briefly prior to opening it to avoid any losses that might occur from lyophilized material adhering to the cap or sides of the tube".
Stability & Storage:	Use a manual defrost freezer and avoid repeated freeze-thaw cycles. 12 months from date of receipt, -20 to -70°C as supplied. 6 months, -20 to -70°C under sterile conditions after reconstitution. 1 month, 2 to 8°C under sterile conditions after reconstitution.
Shipping:	The product is shipped at 4°C. Upon receipt, store it immediately at the temperature recommended above.

Application Information

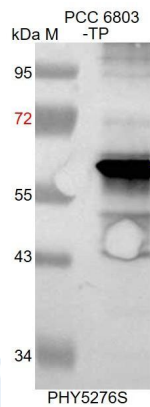
Recommended Dilution:	Western Blot (1:1000-1:2000) Note: Optimal dilutions/concentrations should be determined by the end user.
Expected / apparent MW:	81 / 62 kDa
Confirmed Reactivity:	<i>Synechocystis sp.</i> PCC 6803
Predicted Reactivity:	Among species analyzed, the sequence of the synthetic peptide used for immunization is 80-99% homologues with the sequence in <i>Brassica rapa</i> , <i>Medicago truncatula</i> , <i>Solanum tuberosum</i> ,

Research Use Only

Chlamydomonas reinhardtii, *Oryza sativa*, *Zea mays*, *Brassica napus*, *Populus trichocarpa*, *Sorghum bicolor*, *Oryza sativa*, *Vitis vinifera*, *Triticum aestivum*, *Setaria viridis*, *Spinacia oleracea*, *Glycine max*, *Arabidopsis thaliana*, *Hordeum vulgare*, *Panicum virgatum*, *Solanum lycopersicum*, *Nicotiana tabacum*, *Cucumis sativus*, *Gossypium raimondii*, *Physcomitrium patens*.

For homologues with other species especially algae, please contact tech support at tech@phytoab.com.

Application Example



PCC 6803-TP: 15 µg total protein from *Synechocystis sp.* PCC 6803.

Electrophoresis: 12% SDS-PAGE

Transfer: blotting to NC (nitrocellulose) membrane for 1 h.

Blocking: 5% skim milk at RT or 4°C for 1 h.

Primary antibody: 1:1000 dilution overnight at 4°C.

Secondary antibody: 1:5000 dilution using Goat Anti-Rabbit IgG

H&L(HRP) (Cat# PHY6000).

Detection: using chemiluminescence substrate and image were captured with CCD camera.