

Anti-Tubulin gamma-1 / 2 chain antibody

Catalog: PHY0902S

Product Information

Description:	Rabbit polyclonal antibody
Background:	γ -Tubulin is a highly conserved member of the tubulin superfamily that is located on the minus end of microtubules in microtubule organizing centers, where such structures are present in the cell.
Synonyms:	γ -tubulin 1/2, GAMMA-TUBULIN, TUBG1/2, ARABIDOPSIS THALIANA GAMMA-TUBULIN COMPLEX PROTEIN 1/2, ATGCP1/2, GAMMA-TUBULIN COMPLEX PROTEIN 1/2, GAMMA-TUBULIN 1/2, GCP1/2
Immunogen:	KLH-conjugated synthetic peptide (17 aa from C terminal section) derived from <i>Arabidopsis thaliana</i> TUBG1 (AT3G61650) and TUBG2 (AT5G05620).
Form:	Lyophilized
Quantity:	150 μ g
Purification:	Serum Peptide affinity form antibody available upon request at info@phytoab.com .
Reconstitution:	Reconstitution with 150 μ l of sterile water. "Note: please spin tube briefly prior to opening it to avoid any losses that might occur from lyophilized material adhering to the cap or sides of the tube".
Stability & Storage:	Use a manual defrost freezer and avoid repeated freeze-thaw cycles. 12 months from date of receipt, -20 to -70°C as supplied. 6 months, -20 to -70°C under sterile conditions after reconstitution. 1 month, 2 to 8°C under sterile conditions after reconstitution.
Shipping:	The product is shipped at 4°C. Upon receipt, store it immediately at the temperature recommended above.

Application Information

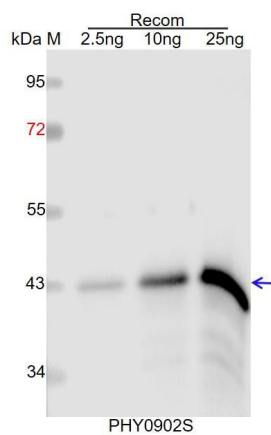
Recommended Dilution:	Western Blot (1:1000-1:2000) Note: Optimal dilutions/concentrations should be determined by the end user.
Expected / apparent MW:	53 kDa
Predicted Reactivity:	Among species analyzed, the sequence of the synthetic peptide used for immunization is 100% homologues with the sequence in <i>Brassica</i>

Research Use Only

rapa, *Brassica napus*, and 80-99% homologues with the sequence in *Vitis vinifera*, *Physcomitrium patens*, *Populus trichocarpa*, *Spinacia oleracea*, *Gossypium raimondii*, *Cucumis sativus*, *Nicotiana tabacum*, *Medicago truncatula*, *Oryza sativa*, *Zea mays*, *Hordeum vulgare*, *Panicum virgatum*, *Triticum aestivum*, *Sorghum bicolor*, *Solanum tuberosum*, *Solanum lycopersicum*, *Glycine max*.

For more species homologues information, please contact tech support at tech@phytoab.com.

Application Example



Recom: 2.5 ng, 10 ng and 25 ng recombinant protein containing the peptide for immunization and having a molecular mass of 43 kDa.

Electrophoresis: 12% SDS-PAGE

Transfer: blotting to NC (nitrocellulose) membrane for 1 h.

Blocking: 5% skim milk at RT or 4°C for 1 h.

Primary antibody: 1:1000 dilution overnight at 4°C.

Secondary antibody: 1:10000 dilution using Goat Anti-Rabbit IgG H&L (HRP) (Cat# PHY6000).

Detection: using chemiluminescence substrate and image were captured with CCD camera.