

Anti-Os09g0553200, C-terminal antibody

Catalog: PHY4031S

Product Information

| | |
|------------------------|---|
| Description: | Rabbit polyclonal antibody |
| Background: | UDPase, Pollen mother cell (PMC) meiosis, Pollen development (Os09t0553200-01) |
| Synonyms: | Os09g0553200, UDP-Glucose Pyrophosphorylase1, UGPase, UGPase 1, UTP:glucose phosphate uridylyltransferase/OsUgp1, UGP2, UGP3, Ugp1 |
| Immunogen: | KLH-conjugated synthetic peptide (14 aa from C terminal section) derived from <i>Oryza sativa</i> Os09g0553200. |
| Form: | Lyophilized |
| Quantity: | 50 µg |
| Purification: | Serum |
| Reconstitution: | Reconstitution with 50µl of sterile water. "Note: please spin tube briefly prior to opening it to avoid any losses that might occur from lyophilized material adhering to the cap or sides of the tube". |
| Stability & | Use a manual defrost freezer and avoid repeated freeze-thaw cycles. |
| Storage: | 12 months from date of receipt, -20 to -70°C as supplied. 6 months, -20 to -70°C under sterile conditions after reconstitution. 1 month, 2 to 8°C under sterile conditions after reconstitution. |
| Shipping: | The product is shipped at 4°C. Upon receipt, store it immediately at the temperature recommended above. |

Application Information

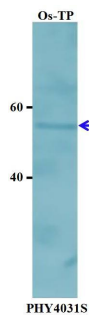
| | |
|--------------------------------|--|
| Recommended Dilution: | Western Blot (1:1000-1:2000) Note: Optimal dilutions/concentrations should be determined by the end user. |
| Expected / apparent MW: | 52 kDa |
| Confirmed Reactivity: | <i>Oryza sativa</i> |
| Predicted Reactivity: | Among species analyzed, the sequence of the synthetic peptide used for immunization is 80-99% homologues with the sequence in <i>Sorghum bicolor</i> , <i>Nicotiana tabacum</i> , <i>Populus trichocarpa</i> , <i>Triticum</i> |

Research Use Only

aestivum, *Solanum tuberosum*, *Solanum lycopersicum*, *Zea mays*,
Brassica napus, *Panicum virgatum*, *Brassica rapa*, *Gossypium*
raimondii, *Glycine max*, *Medicago truncatula*.

For more species homologues information, please contact tech support at tech@phytoab.com.

Application Example



Os-TP: total protein from *Oryza sativa*.

Primary antibody: 1:1000 dilution overnight at 4°C.

Secondary antibody: 1:10000 dilution using Goat Anti-Rabbit IgG H&L(HRP) (Cat# PHY6000).

Detection: using chemiluminescence substrate and image were captured with CCD camera.