

Anti-Os08g0496500 antibody

Catalog: PHY4231S

Product Information

Description:	Rabbit polyclonal antibody
Background:	Histone-fold domain containing protein. (Os08t0496500-01)
Synonyms:	Os08g0496500, NUCLEAR FACTOR-Y subunit C6, NUCLEAR FACTOR-Y subunit NF-YC6, Nuclear factor Y C subunit 6, Nuclear factor Y C6 subunit/CBF-C, NF-YC, NF-YC6, Os-NF-YC6, OsHAP5D, OsNF-YC6
Immunogen:	KLH-conjugated synthetic peptide (13 aa from Central section) derived from <i>Oryza sativa</i> Os08g0496500.
Form:	Lyophilized
Quantity:	50 µg
Purification:	Serum
Reconstitution:	Reconstitution with 50µl of sterile water. "Note: please spin tube briefly prior to opening it to avoid any losses that might occur from lyophilized material adhering to the cap or sides of the tube".
Stability &	Use a manual defrost freezer and avoid repeated freeze-thaw cycles.
Storage:	12 months from date of receipt, -20 to -70°C as supplied. 6 months, -20 to -70°C under sterile conditions after reconstitution. 1 month, 2 to 8°C under sterile conditions after reconstitution.
Shipping:	The product is shipped at 4°C. Upon receipt, store it immediately at the temperature recommended above.

Application Information

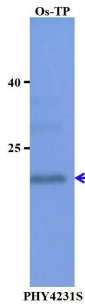
Recommended Dilution:	Western Blot (1:100-1:500) Note: Optimal dilutions/concentrations should be determined by the end user.
Expected / apparent MW:	22 kDa
Confirmed Reactivity:	<i>Oryza sativa</i>
Predicted Reactivity:	Among species analyzed, the sequence of the synthetic peptide used for immunization is 100% homologues with the sequence in <i>Panicum virgatum</i> , <i>Setaria viridis</i> , <i>Hordeum vulgare</i> , <i>Triticum aestivum</i> , <i>Zea</i>

Research Use Only

mays, *Sorghum bicolor*.

For more species homologues information, please contact tech support at tech@phytoab.com.

Application Example



Os-TP: total protein from *Oryza sativa*.

Primary antibody: 1:500 dilution overnight at 4°C.

Secondary antibody: 1:10000 dilution using Goat Anti-Rabbit IgG H&L(HRP) (Cat# PHY6000).

Detection: using chemiluminescence substrate and image were captured with CCD camera.