

Anti-OsSPL14 antibody

Catalog: PHY4456S

Product Information

| | |
|---------------------------------|---|
| Description: | Rabbit polyclonal antibody |
| Background: | Squamosa promoter-binding-like transcription activator, Regulation of branching in panicles and vegetative shoots, Semidominant regulator of plant architecture (Os08t0509600-01) |
| Synonyms: | OsSPL14, WEALTHY FARMER'S PANICLE, IDEAL PLANT ARCHITECTURE 1, Ideal Plant Architecture1, Squamosa promoter-binding-like protein 14, SQUAMOSA PROMOTER BINDING PROTEIN-LIKE 14, Squamosa promoter binding protein like-14, IDEAL PLANT ARCHITECTURE1/WFP, SPL14, IPA1, WFP/IPA1 |
| Immunogen: | KLH-conjugated synthetic peptide (16 aa from Central section) derived from <i>Oryza sativa</i> OsSPL14 (Os08g0509600). |
| Form: | Lyophilized |
| Quantity: | 150 µg |
| Purification: | Serum Peptide affinity form antibody available upon request at info@phytoab.com . |
| Reconstitution: | Reconstitution with 150 µl of sterile water. "Note: please spin tube briefly prior to opening it to avoid any losses that might occur from lyophilized material adhering to the cap or sides of the tube". |
| Stability & Storage: | Use a manual defrost freezer and avoid repeated freeze-thaw cycles. 12 months from date of receipt, -20 to -70°C as supplied. 6 months, -20 to -70°C under sterile conditions after reconstitution. 1 month, 2 to 8°C under sterile conditions after reconstitution. |
| Shipping: | The product is shipped at 4°C. Upon receipt, store it immediately at the temperature recommended above. |

Application Information

| | |
|------------------------------|--|
| Recommended Dilution: | Western Blot (1:1000-1:2000) Note: Optimal dilutions/concentrations should be determined by the end user. |
|------------------------------|--|

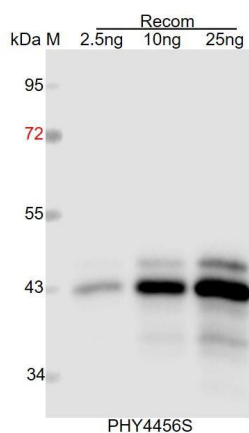
Research Use Only

Expected / apparent MW: 42 kDa

Predicted Reactivity: Among species analyzed, the sequence of the synthetic peptide used for immunization is 80-99% homologues with the sequence in *Panicum virgatum*.

For more species homologues information, please contact tech support at tech@phytoab.com.

Application Example



Recom: 2.5 ng, 10 ng and 25 ng recombinant protein containing the peptide for immunization and having a molecular mass of 43 kDa.

Electrophoresis: 12% SDS-PAGE

Transfer: blotting to NC (nitrocellulose) membrane for 1 h.

Blocking: 5% skim milk at RT or 4°C for 1 h.

Primary antibody: 1:1000 dilution overnight at 4°C.

Secondary antibody: 1:10000 dilution using Goat Anti-Rabbit IgG H&L (HRP) (Cat# PHY6000).

Detection: using chemiluminescence substrate and image were captured with CCD camera.