

Anti-Os10g0167300 antibody

Catalog: PHY4050S

Product Information

| | |
|---------------------------------|---|
| Description: | Rabbit polyclonal antibody |
| Background: | Similar to Enolase 2 (EC 4.2.1.11) (2-phosphoglycerate dehydratase 2) (2-phospho- D-glycerate hydro-lyase 2). (Os10t0167300-01); Similar to Enolase 2 (EC 4.2.1.11) (2-phosphoglycerate dehydratase 2) (2-phospho- D-glycerate hydro-lyase 2). (Os10t0167300-02) |
| Synonyms: | Os10g0167300, Early Embryogenesis-Specific Enolase 1, Enolase 1/OsEE1, OsENO1 |
| Immunogen: | KLH-conjugated synthetic peptide (14 aa from N terminal section) derived from <i>Oryza sativa</i> Os10g0167300. |
| Form: | Lyophilized |
| Quantity: | 50 µg |
| Purification: | Serum |
| Reconstitution: | Reconstitution with 50µl of sterile water. "Note: please spin tube briefly prior to opening it to avoid any losses that might occur from lyophilized material adhering to the cap or sides of the tube". |
| Stability & Storage: | Use a manual defrost freezer and avoid repeated freeze-thaw cycles. 12 months from date of receipt, -20 to -70°C as supplied. 6 months, -20 to -70°C under sterile conditions after reconstitution. 1 month, 2 to 8°C under sterile conditions after reconstitution. |
| Shipping: | The product is shipped at 4°C. Upon receipt, store it immediately at the temperature recommended above. |

Application Information

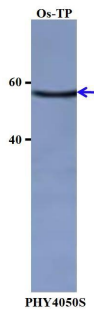
| | |
|--------------------------------|--|
| Recommended Dilution: | Western Blot (1:1000-1:2000) Note: Optimal dilutions/concentrations should be determined by the end user. |
| Expected / apparent MW: | 48 kDa |
| Confirmed Reactivity: | <i>Oryza sativa</i> |
| Predicted Reactivity: | Among species analyzed, the sequence of the synthetic peptide used |

Research Use Only

for immunization is 100% homologues with the sequence in *Triticum aestivum*, *Hordeum vulgare*, *Zea mays*, *Panicum virgatum*, *Setaria viridis*, and 80-99% homologues with the sequence in *Brassica napus*, *Brassica rapa*, *Gossypium raimondii*, *Physcomitrium patens*, *Nicotiana tabacum*, *Arabidopsis thaliana*, *Solanum tuberosum*, *Spinacia oleracea*, *Solanum lycopersicum*.

For more species homologues information, please contact tech support at tech@phytoab.com.

Application Example



Os-TP: total protein from *Oryza sativa*.

Primary antibody: 1:1000 dilution overnight at 4 °C.

Secondary antibody: 1:10000 dilution using Goat Anti-Rabbit IgG H&L(HRP) (Cat# PHY6000).

Detection: using chemiluminescence substrate and image were captured with CCD camera.