

Anti-CP12 polypeptide antibody

Catalog: PHY5122S

Product Information

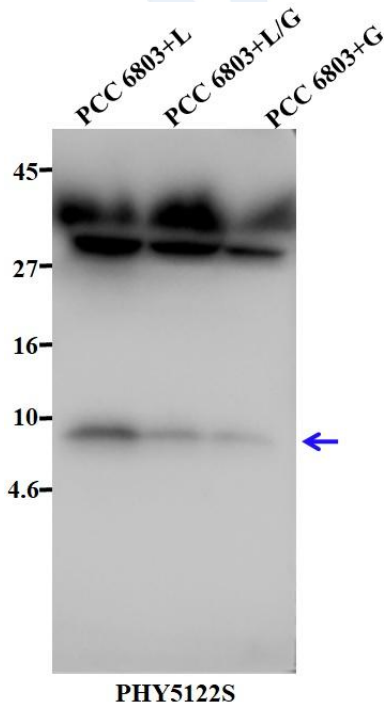
| | |
|---------------------------------|---|
| Description: | Rabbit polyclonal antibody |
| Background: | cp12 |
| Synonyms: | cp12 |
| Immunogen: | KLH-conjugated synthetic peptide (15 aa from N terminal section) protein derived from <i>Synechocystis sp.</i> PCC 6803 cp12 (ssl3364). |
| Form: | Lyophilized |
| Quantity: | 150 µg |
| Purification: | Serum Peptide affinity form antibody available upon request at info@phytoab.com . |
| Reconstitution: | Reconstitution with 150 µl of sterile water. "Note: please spin tube briefly prior to opening it to avoid any losses that might occur from lyophilized material adhering to the cap or sides of the tube". |
| Stability & Storage: | Use a manual defrost freezer and avoid repeated freeze-thaw cycles. 12 months from date of receipt, -20 to -70°C as supplied. 6 months, -20 to -70°C under sterile conditions after reconstitution. 1 month, 2 to 8°C under sterile conditions after reconstitution. |
| Shipping: | The product is shipped at 4°C. Upon receipt, store it immediately at the temperature recommended above. |

Application Information

| | |
|--------------------------------|---|
| Recommended Dilution: | Western Blot (1:1000-1:2000) Note: Optimal dilutions/concentrations should be determined by the end user. |
| Expected / apparent MW: | 8 kDa |
| Confirmed Reactivity: | <i>Synechocystis sp.</i> PCC 6803 |
| Predicted Reactivity: | For homologues with other species especially algae, please contact tech support at tech@phytoab.com . |

Research Use Only

Application Example



PCC 6803+L: 30 µg whole-cell lysate protein from WT of *Synechocystis* sp. PCC 6803 (Light without Glucose).

PCC 6803+L/G: 30 µg whole-cell lysate protein from WT of *Synechocystis* sp. PCC 6803 (Light Plus Glucose).

PCC6803+G: 30 µg whole-cell lysate protein from WT of *Synechocystis* sp. PCC 6803 (Dark Plus Glucose).

Electrophoresis: (5-20)% Gradient gel

Transfer: blotting to NC (nitrocellulose) membrane for 1 h.

Blocking: 5% skim milk at RT or 4°C for 1 h.

Primary antibody: 1:1000 dilution overnight at 4°C.

Secondary antibody: 1:10000 dilution using Goat Anti-Rabbit IgG H&L (HRP) (Cat# PHY6000).

Detection: using chemiluminescence substrate and image were captured with CCD camera.