

Anti-ATP-dependent Clp protease ATP-binding subunit CLPT1, chloroplastic, C-terminal antibody

Catalog: PHY0862S

Product Information

Description:	Rabbit polyclonal antibody
Background:	Most Clp proteins in Arabidopsis are located in the chloroplast stroma (ClpB3 (AT5G15450), ClpC1-2, ClpD (AT5G51070), ClpP1 (ATCG00670), ClpP3-6, ClpR1-4, ClpS1-2, and ClpT) and all are nucleus-encoded, except for the plastomic ClpP1. CLPT1 first binds to the heptameric P-ring containing the CLP3-6 subunits followed by CLPT2 (AT4G12060), and only then does the P-ring combine with the R-ring composed of the clpP1 and CLPR1-4 subunits
Synonyms:	ClpS1, CLPT1
Immunogen:	KLH-conjugated synthetic peptide (18 aa from C terminal section) derived from <i>Arabidopsis thaliana</i> ClpS1 (AT4G25370).
Form:	Lyophilized
Quantity:	150 µg
Purification:	Serum Peptide affinity form antibody available upon request at info@phytoab.com .
Reconstitution:	Reconstitution with 150 µl of sterile water. "Note: please spin tube briefly prior to opening it to avoid any losses that might occur from lyophilized material adhering to the cap or sides of the tube".
Stability & Storage:	Use a manual defrost freezer and avoid repeated freeze-thaw cycles. 12 months from date of receipt, -20 to -70°C as supplied. 6 months, -20 to -70°C under sterile conditions after reconstitution. 1 month, 2 to 8°C under sterile conditions after reconstitution.
Shipping:	The product is shipped at 4°C. Upon receipt, store it immediately at the temperature recommended above.

Application Information

Recommended Dilution:	Western Blot (1:1000-1:2000) Note: Optimal dilutions/concentrations should be determined by the end user.
Expected / apparent MW:	26 kDa

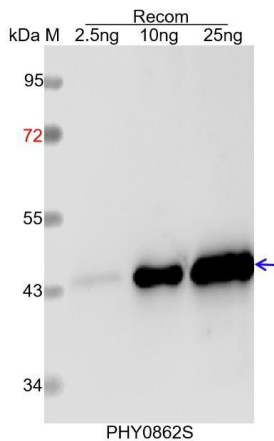
Research Use Only

Predicted Reactivity:

Among species analyzed, the sequence of the synthetic peptide used for immunization is 80-99% homologues with the sequence in *Brassica napus*.

For more species homologues information, please contact tech support at tech@phytoab.com.

Application Example



Recom: 2.5 ng, 10 ng and 25 ng recombinant protein containing the peptide for immunization and having a molecular mass of 44 kDa.

Electrophoresis: 12% SDS-PAGE

Transfer: blotting to NC (nitrocellulose) membrane for 1 h.

Blocking: 5% skim milk at RT or 4°C for 1 h.

Primary antibody: 1:1000 dilution overnight at 4°C.

Secondary antibody: 1:10000 dilution using Goat Anti-Rabbit IgG H&L (HRP) (Cat# PHY6000).

Detection: using chemiluminescence substrate and image were captured with CCD camera.