

Anti-Peroxisomal membrane protein PEX14 antibody

Catalog: PHY0492A

Product Information

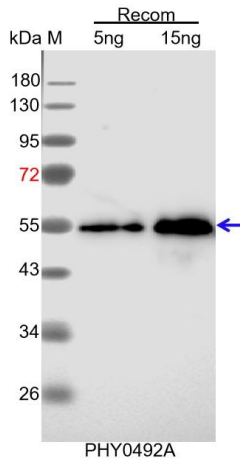
| | |
|--------------------------------|---|
| Description: | Rabbit polyclonal antibody |
| Background: | Pex14p has a protein transporter activity and is involved in protein targeting into peroxisome. |
| Synonyms: | Pex14, Pex14p, ATPED2, ATPEX14, PED2, PEROXIN 14, PEROXISOME DEFECTIVE 2, PEX14 |
| Immunogen: | KLH-conjugated synthetic peptide (14 aa from C terminal section) derived from <i>Arabidopsis thaliana</i> Pex14 (AT5G62810). |
| Form: | Lyophilized |
| Quantity: | 150 µg |
| Purification: | Immunogen affinity purified |
| Reconstitution: | Reconstitution with 150 µl of 0.01M sterile PBS. "Note: please spin tube briefly prior to opening it to avoid any losses that might occur from lyophilized material adhering to the cap or sides of the tube". |
| Stability &Storage: | Use a manual defrost freezer and avoid repeated freeze-thaw cycles. 12 months from date of receipt, -20 to -70°C as supplied. 6 months, -20 to -70°C under sterile conditions after reconstitution. 1 month, 2 to 8°C under sterile conditions after reconstitution. |
| Shipping: | The product is shipped at 4°C. Upon receipt, store it immediately at the temperature recommended above. |

Application Information

| | |
|--------------------------------|--|
| Recommended Dilution: | Western Blot (1:1000-1:2000) Note: Optimal dilutions/concentrations should be determined by the end user. |
| Expected / apparent MW: | 56 kDa |
| Predicted Reactivity: | Among species analyzed, the sequence of the synthetic peptide used for immunization is 80-99% homologues with the sequence in <i>Vitis vinifera</i> , <i>Brassica rapa</i> , <i>Brassica napus</i> . For more species homologues information, please contact tech support at tech@phytoab.com . |

Research Use Only

Application Example



Recom: 5 ng and 15 ng recombinant protein containing the peptide for immunization and having a molecular mass of 55 kDa.

Electrophoresis: 12% SDS-PAGE.

Transfer: blotting to NC (nitrocellulose) membrane for 1h.

Blocking: 5% skim milk at RT or 4°C for 1h.

Primary antibody: 1:1000 dilution overnight at 4°C.

Secondary antibody: 1:10000 dilution using Goat Anti-Rabbit IgG H&L (HRP) (Cat# PHY6000).

Detection: using chemiluminescence substrate and image were captured with CCD camera.