

Anti-Chlorophyll a-b binding protein CP29.3, chloroplastic antibody

Catalog: PHY3853S

Product Information

Description:	Rabbit polyclonal antibody
Background:	LHCB4.3 is light harvesting complex of photosystem II.
Synonyms:	LHCB4.3, LHCB8, LIGHT HARVESTING COMPLEX PHOTOSYSTEM II
Immunogen:	KLH-conjugated synthetic peptide (16 aa from C terminal section) derived from <i>Arabidopsis thaliana</i> LHCB4.3 (AT2G40100).
Form:	Lyophilized
Quantity:	150 µg
Purification:	Serum Peptide affinity form antibody available upon request at info@phytoab.com .
Reconstitution:	Reconstitution with 150 µl of sterile water. "Note: please spin tube briefly prior to opening it to avoid any losses that might occur from lyophilized material adhering to the cap or sides of the tube".
Stability &Storage:	Use a manual defrost freezer and avoid repeated freeze-thaw cycles. 12 months from date of receipt, -20 to -70°C as supplied. 6 months, -20 to -70°C under sterile conditions after reconstitution. 1 month, 2 to 8°C under sterile conditions after reconstitution.
Shipping:	The product is shipped at 4°C. Upon receipt, store it immediately at the temperature recommended above.

Application Information

Recommended Dilution:	Western Blot(1:1000-1:2000) Note: Optimal dilutions/concentrations should be determined by the end user.
Expected / apparent MW:	30 kDa
Predicted Reactivity:	Among species analyzed, the sequence of the synthetic peptide used for immunization is 80-99% homologues with the sequence in <i>Brassica napus</i> , <i>Brassica rapa</i> , <i>Solanum tuberosum</i> , <i>Vitis vinifera</i> , <i>Physcomitrium patens</i> , <i>Zea mays</i> , <i>Glycine max</i> , <i>Setaria viridis</i> , <i>Oryza</i>

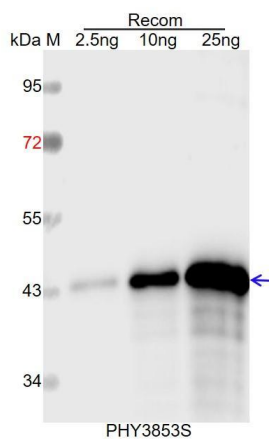
Research Use Only

sativa, Panicum virgatum, Sorghum bicolor, Populus trichocarpa, Gossypium raimondii, Nicotiana tabacum, Solanum lycopersicum, Cucumis sativus, Medicago truncatula, Hordeum vulgare, Triticum aestivum, Spinacia oleracea.

The sequence of the synthetic peptide used for immunization is 81% (13 / 16) homologues with the sequence in LHCB4.1 (AT5G01530) and LHCB4.2 (AT3G08940).

For more species homologues information, please contact tech support at tech@phytoab.com.

Application Example



Recom: 2.5 ng, 10 ng and 25 ng recombinant protein containing the peptide for immunization and having a molecular mass of 44 kDa.

Electrophoresis: 12% SDS-PAGE

Transfer: blotting to NC (nitrocellulose) membrane for 1 h.

Blocking: 5% skim milk at RT or 4°C for 1 h.

Primary antibody: 1:1000 dilution overnight at 4°C.

Secondary antibody: 1:10000 dilution using Goat Anti-Rabbit IgG H&L (HRP) (Cat# PHY6000).

Detection: using chemiluminescence substrate and image were captured with CCD camera.