

Anti-Cytochrome f antibody

Catalog: PHY5342S

Product Information

Description:	Rabbit polyclonal antibody
Background:	PetA
Synonyms:	PetA, petA
Immunogen:	KLH-conjugated synthetic peptide (18 aa from N terminal section) derived from <i>Synechocystis sp.</i> PCC 6803 PetA (sll1317).
Form:	Lyophilized
Quantity:	150 µg
Purification:	Serum Peptide affinity form antibody available upon request at info@phytoab.com .
Reconstitution:	Reconstitution with 150 µl of sterile water. "Note: please spin tube briefly prior to opening it to avoid any losses that might occur from lyophilized material adhering to the cap or sides of the tube".
Stability & Storage:	Use a manual defrost freezer and avoid repeated freeze-thaw cycles. 12 months from date of receipt, -20 to -70°C as supplied. 6 months, -20 to -70°C under sterile conditions after reconstitution. 1 month, 2 to 8°C under sterile conditions after reconstitution.
Shipping:	The product is shipped at 4°C. Upon receipt, store it immediately at the temperature recommended above.

Application Information

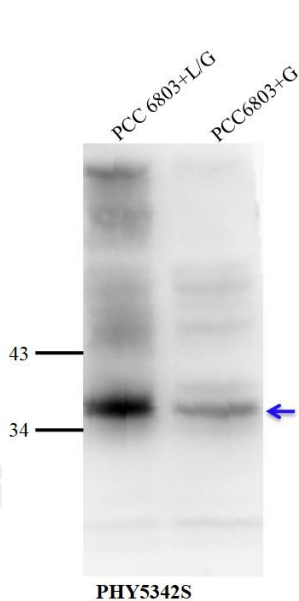
Recommended Dilution:	Western Blot (1:1000-1:2000) Note: Optimal dilutions/concentrations should be determined by the end user.
Expected / apparent MW:	35 kDa
Confirmed Reactivity:	<i>Synechocystis sp.</i> PCC 6803
Predicted Reactivity:	Among species analyzed, the sequence of the synthetic peptide used for immunization is 80-99% homologues with the sequence in <i>Medicago truncatula</i> , <i>Solanum tuberosum</i> , <i>Zea mays</i> , <i>Glycine max</i> , <i>Oryza sativa Japonica Group</i> , <i>Arabidopsis thaliana</i> , <i>Leymus</i>

Research Use Only

chinensis, *Populus trichocarpa*, *Gossypium raimondii*, *Hordeum vulgare* subsp. *spontaneum*, *Cucumis sativus*, *Brassica rapa*, *Brassica napus* var. *napus*, *Nicotiana tabacum*, *Panicum virgatum*, *Spinacia oleracea*, *Vitis vinifera*, *Triticum aestivum*, *Solanum lycopersicum*.

For homologues with other species especially algae, please contact tech support at tech@phytoab.com.

Application Example



PCC 6803+L/G: 30 µg whole-cell lysate protein from WT of *Synechocystis* sp. PCC 6803 (Light Plus Glucose).

PCC6803+G: 30 µg whole-cell lysate protein from WT of *Synechocystis* sp. PCC 6803 (Dark Plus Glucose).

Electrophoresis: (5-20)% Gradient gel

Transfer: blotting to NC (nitrocellulose) membrane for 1 h.

Blocking: 5% skim milk at RT or 4°C for 1 h.

Primary antibody: 1:1000 dilution overnight at 4°C.

Secondary antibody: 1:10000 dilution using Goat Anti-Rabbit IgG H&L (HRP) (Cat# PHY6000).

Detection: using chemiluminescence substrate and image were captured with CCD camera.