

Anti-Uroporphyrinogen decarboxylase 2, chloroplastic, C-terminal antibody

Catalog: PHY2721S

Product Information

| | |
|---------------------------------|--|
| Description: | Rabbit polyclonal antibody |
| Background: | HEME2 catalyzes the decarboxylation of four acetate groups of uroporphyrinogen-III to yield coproporphyrinogen-III. |
| Synonyms: | HEME2 |
| Immunogen: | KLH-conjugated synthetic peptide (16 aa from C terminal section) derived from <i>Arabidopsis thaliana</i> HEME2 (AT2G40490). |
| Form: | Lyophilized |
| Quantity: | 150 µg |
| Purification: | Serum |
| Reconstitution: | Peptide affinity form antibody available upon request at info@phytoab.com . Reconstitution with 150 µl of sterile water. "Note: please spin tube briefly prior to opening it to avoid any losses that might occur from lyophilized material adhering to the cap or sides of the tube". |
| Stability & Storage: | Use a manual defrost freezer and avoid repeated freeze-thaw cycles. 12 months from date of receipt, -20 to -70°C as supplied. 6 months, -20 to -70°C under sterile conditions after reconstitution. 1 month, 2 to 8°C under sterile conditions after reconstitution. |
| Shipping: | The product is shipped at 4°C. Upon receipt, store it immediately at the temperature recommended above. |

Application Information

| | |
|--------------------------------|--|
| Recommended Dilution: | Western Blot (1:1000-1:5000) Note: Optimal dilutions/concentrations should be determined by the end user. |
| Expected / apparent MW: | 44 / 40 kDa |
| Confirmed Reactivity: | <i>Arabidopsis thaliana</i> |
| Predicted Reactivity: | Among species analyzed, the sequence of the synthetic peptide used for immunization is 100% homologues with the sequence in <i>Zea</i> |

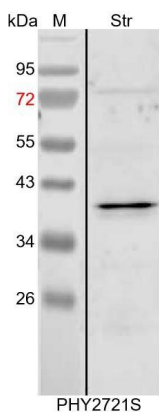
Research Use Only

mays, *Panicum virgatum*, *Populus trichocarpa*, *Hordeum vulgare*, *Setaria viridis*, *Glycine max*, *Sorghum bicolor*, *Nicotiana tabacum*, *Spinacia oleracea*, *Cucumis sativus*, *Solanum tuberosum*, *Brassica rapa*, *Brassica napus*, *Sol Glycine max*, *anum lycopersicum*, *Oryza sativa*, and 80-99% homologues with the sequence in *Vitis vinifera*, *Gossypium raimondii*, *Medicago truncatula*.

For more species homologues information, please contact tech support at tech@phytoab.com.

Application Example

Example1:



Str: 15 µg stromal protein from *Arabidopsis thaliana*.

Electrophoresis: 15% SDS-PAGE

Transfer: blotting to NC (nitrocellulose) membrane for 1 h.

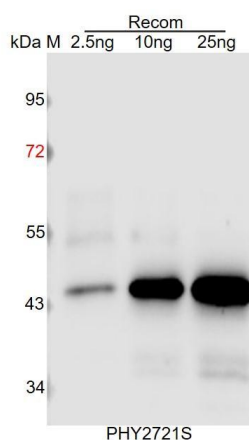
Blocking: 5% skim milk at RT or 4°C for 1 h.

Primary antibody: 1:5000 dilution overnight at 4°C.

Secondary antibody: 1:10000 dilution using Goat Anti-Rabbit IgG H&L (HRP) (Cat# PHY6000)

Detection: using chemiluminescence substrate and image were captured with CCD camera.

Example2:



Recom: 2.5 ng, 10 ng and 25 ng recombinant protein containing the peptide for immunization and having a molecular mass of 45 kDa.

Electrophoresis: 12% SDS-PAGE

Transfer: blotting to NC (nitrocellulose) membrane for 1 h.

Blocking: 5% skim milk at RT or 4°C for 1 h.

Primary antibody: 1:1000 dilution overnight at 4°C.

Secondary antibody: 1:10000 dilution using Goat Anti-Rabbit IgG H&L (HRP) (Cat# PHY6000).

Detection: using chemiluminescence substrate and image were captured with CCD camera.