

Anti-Peptidyl-prolyl cis-trans isomerase CYP19-4, C-terminal antibody

Catalog: PHY0920S

Product Information

Description:	Rabbit polyclonal antibody
Background:	CYP19-4 exhibits peptidylprolyl cis/trans-isomerase and protein refolding activities that were sensitive to cyclosporin A. The protein interacts with GNOM in vitro and may regulate the ARF GEF function of the GNOM protein during embryogenesis.
Synonyms:	Cyp5, ARABIDOPSIS THALIANA CYCLOPHILIN 5, ATCYP5, CYCLOPHILIN 19-4, CYCLOPHILIN 5, CYP19-4
Immunogen:	KLH-conjugated synthetic peptide (15 aa from C terminal section) derived from <i>Arabidopsis thaliana</i> Cyp5 (AT2G29960).
Form:	Lyophilized
Quantity:	150 µg
Purification:	Serum Peptide affinity form antibody available upon request at info@phytoab.com .
Reconstitution:	Reconstitution with 150 µl of sterile water. "Note: please spin tube briefly prior to opening it to avoid any losses that might occur from lyophilized material adhering to the cap or sides of the tube".
Stability & Storage:	Use a manual defrost freezer and avoid repeated freeze-thaw cycles. 12 months from date of receipt, -20 to -70°C as supplied. 6 months, -20 to -70°C under sterile conditions after reconstitution. 1 month, 2 to 8°C under sterile conditions after reconstitution.
Shipping:	The product is shipped at 4°C. Upon receipt, store it immediately at the temperature recommended above.

Application Information

Recommended Dilution:	Western Blot (1:1000-1:2000) Note: Optimal dilutions/concentrations should be determined by the end user.
Expected / apparent MW:	22 kDa

Research Use Only

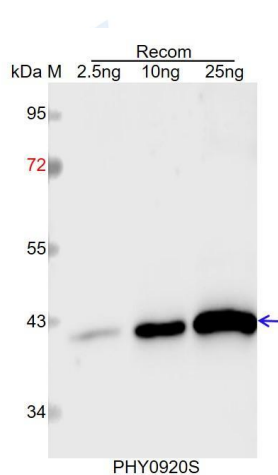
Predicted Reactivity:

Among species analyzed, the sequence of the synthetic peptide used for immunization is 100% homologues with the sequence in *Brassica napus*, *Brassica rapa*, and 80-99% homologues with the sequence in *Nicotiana tabacum*, *Medicago truncatula*, *Glycine max*, *Triticum aestivum*, *Gossypium raimondii*, *Cucumis sativus*, *Solanum lycopersicum*, *Solanum tuberosum*, *Oryza sativa*, *Spinacia oleracea*, *Populus trichocarpa*, *Vitis vinifera*, *Zea mays*, *Panicum virgatum*, *Setaria viridis*, *Sorghum bicolor*.

The sequence of the synthetic peptide used for immunization is 87% (13 / 15) homologues with the sequence in ROC7 (AT5G58710).

For more species homologues information, please contact tech support at tech@phytoab.com.

Application Example



Recom: 2.5 ng, 10 ng and 25 ng recombinant protein containing the peptide for immunization and having a molecular mass of 41 kDa.

Electrophoresis: 12% SDS-PAGE

Transfer: blotting to NC (nitrocellulose) membrane for 1 h.

Blocking: 5% skim milk at RT or 4°C for 1 h.

Primary antibody: 1:1000 dilution overnight at 4°C.

Secondary antibody: 1:10000 dilution using Goat Anti-Rabbit IgG H&L (HRP) (Cat# PHY6000).

Detection: using chemiluminescence substrate and image were captured with CCD camera.