

Anti-NAD(P)-dependent glyceraldehyde-3-phosphate dehydrogenase antibody

Catalog: PHY5119A

Product Information

Description:	Rabbit polyclonal antibody
Background:	Gap2 is involved in photosynthetic carbon assimilation, it catalyzes the NAD(P)-dependent oxidative phosphorylation of glyceraldehyde 3-phosphate (G3P) to 1,3-bisphosphoglycerate (BPG).
Synonyms:	Gap2, GAPDH 2
Immunogen:	KLH-conjugated synthetic peptide (15 aa from Central section) derived from <i>Synechocystis sp.</i> PCC 6803 Gap2 (sll1342).
Form:	Lyophilized
Quantity:	150 µg
Purification:	Immunogen affinity purified
Reconstitution:	Reconstitution with 150 µl of 0.01 M sterile PBS. "Note: please spin tube briefly prior to opening it to avoid any losses that might occur from lyophilized material adhering to the cap or sides of the tube".
Stability & Storage:	Use a manual defrost freezer and avoid repeated freeze-thaw cycles. 12 months from date of receipt, -20 to -70°C as supplied. 6 months, -20 to -70°C under sterile conditions after reconstitution. 1 month, 2 to 8°C under sterile conditions after reconstitution.
Shipping:	The product is shipped at 4°C. Upon receipt, store it immediately at the temperature recommended above.

Application Information

Recommended Dilution:	Western Blot (1:1000-1:2000) Note: Optimal dilutions/concentrations should be determined by the end user.
Expected / apparent MW:	37 kDa
Confirmed Reactivity:	<i>Synechocystis sp.</i> PCC 6803
Predicted Reactivity:	Among analyzed species, the sequence of the synthetic peptide used for immunization is 100% homologous with the sequence in

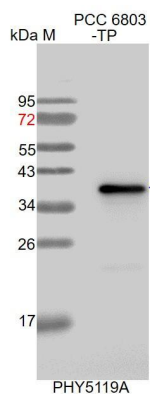
Research Use Only

Synechococcus elongatus PCC 7942, and 80-99% homologues with the sequence in *Chlamydomonas reinhardtii*, *Solanum tuberosum*, *Solanum lycopersicum*, *Gossypium raimondii*, *Glycine max*, *Vitis vinifera*, *Cucumis sativus*, *Populus trichocarpa*, *Medicago truncatula*, *Spinacia oleracea*, *Zea mays*, *Nicotiana tabacum*, *Brassica rapa*, *Brassica napus*, *Arabidopsis thaliana*, *Setaria viridis*, *Oryza sativa*, *Panicum virgatum*, *Triticum aestivum*, *Hordeum vulgare*, *Sorghum bicolor*, *Physcomitrella patens*.

For homologues with other species especially algae, please contact tech support at tech@phytoab.com.

Application Example

Example1:



PCC 6803-TP: 10 µg total protein from *Synechocystis* sp. PCC 6803.

Electrophoresis: 15% SDS-PAGE

Transfer: blotting to NC (nitrocellulose) membrane for 1 h.

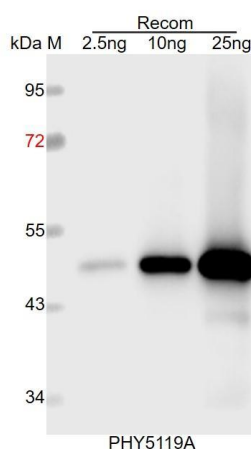
Blocking: 5% skim milk at RT or 4°C for 1 h.

Primary antibody: 1:1000 dilution overnight at 4°C.

Secondary antibody: 1:10000 dilution using Goat Anti-Rabbit IgG H&L (HRP) (Cat# PHY6000).

Detection: using chemiluminescence substrate and image were captured with CCD camera.

Example2:



Recom: 2.5 ng, 10 ng and 25 ng recombinant protein containing the peptide for immunization and having a molecular mass of 50 kDa.

Electrophoresis: 12% SDS-PAGE

Transfer: blotting to NC (nitrocellulose) membrane for 1 h.

Blocking: 5% skim milk at RT or 4°C for 1 h.

Primary antibody: 1:1000 dilution overnight at 4°C.

Secondary antibody: 1:10000 dilution using Goat Anti-Rabbit IgG H&L (HRP) (Cat# PHY6000).

Detection: using chemiluminescence substrate and image were captured with CCD camera.