

Anti-Photosystem II CP43 reaction center protein antibody

Catalog: PHY5409S

Product Information

Description:	Rabbit polyclonal antibody
Background:	sll0851
Synonyms:	psbC
Immunogen:	KLH-conjugated synthetic peptide (15 aa from C terminal section) derived from <i>Synechocystis sp.</i> PCC 6803 psbC (sll0851).
Form:	Lyophilized
Quantity:	150 µg
Purification:	Serum Peptide affinity form antibody available upon request at info@phytoab.com .
Reconstitution:	Reconstitution with 150 µl of sterile water. "Note: please spin tube briefly prior to opening it to avoid any losses that might occur from lyophilized material adhering to the cap or sides of the tube".
Stability & Storage:	Use a manual defrost freezer and avoid repeated freeze-thaw cycles. 12 months from date of receipt, -20 to -70°C as supplied. 6 months, -20 to -70°C under sterile conditions after reconstitution. 1 month, 2 to 8°C under sterile conditions after reconstitution.
Shipping:	The product is shipped at 4°C. Upon receipt, store it immediately at the temperature recommended above.

Application Information

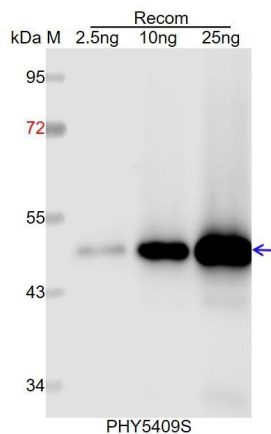
Recommended Dilution:	Western Blot (1:1000-1:2000) Note: Optimal dilutions/concentrations should be determined by the end user.
Expected / apparent MW:	50 kDa
Predicted Reactivity:	Among species analyzed, the sequence of the synthetic peptide used for immunization is 100% homologues with the sequence in <i>Synechococcus elongatus</i> PCC 7942, <i>Chlamydomonas reinhardtii</i> , and 80-99% homologues with the sequence in <i>Brassica napus</i> , <i>Medicago truncatula</i> , <i>Glycine max</i> , <i>Solanum tuberosum</i> , <i>Brassica</i>

Research Use Only

rapa, Populus trichocarpa, Sorghum bicolor, Triticum aestivum, Zea mays, Vitis vinifera, Nicotiana tabacum, Oryza sativa, Setaria viridis, Cucumis sativus, Solanum lycopersicum, Spinacia oleracea, Physcomitrium patens, Leymus chinensis, Solanum tuberosum, Panicum virgatum, Gossypium raimondii, Nicotiana tabacum, Hordeum vulgare, Arabidopsis thaliana.

For homologues with other species especially algae, please contact tech support at tech@phytoab.com.

Application Example



Recom: 2.5 ng, 10 ng and 25 ng recombinant protein containing the peptide for immunization and having a molecular mass of 52 kDa.

Electrophoresis: 12% SDS-PAGE

Transfer: blotting to NC (nitrocellulose) membrane for 1 h.

Blocking: 5% skim milk at RT or 4°C for 1 h.

Primary antibody: 1:1000 dilution overnight at 4°C.

Secondary antibody: 1:10000 dilution using Goat Anti-Rabbit IgG H&L (HRP) (Cat# PHY6000).

Detection: using chemiluminescence substrate and image were captured with CCD camera.