

Anti-ATP-dependent zinc metalloprotease FtsH 2 antibody

Catalog: PHY5130S

Product Information

Description:	Rabbit polyclonal antibody
Background:	FtsH2 acts as a processive, ATP-dependent zinc metallopeptidase for both cytoplasmic and membrane proteins. It plays a role in the quality control of integral membrane proteins.
Synonyms:	ftsH2
Immunogen:	KLH-conjugated synthetic peptide (15 aa from Central section) derived from <i>Synechocystis</i> sp. PCC 6803 ftsH2 (slr0228).
Form:	Lyophilized
Quantity:	150 µg
Purification:	Serum Peptide affinity form antibody available upon request at info@phytoab.com .
Reconstitution:	Reconstitution with 150 µl of sterile water. "Note: please spin tube briefly prior to opening it to avoid any losses that might occur from lyophilized material adhering to the cap or sides of the tube".
Stability & Storage:	Use a manual defrost freezer and avoid repeated freeze-thaw cycles. 12 months from date of receipt, -20 to -70°C as supplied. 6 months, -20 to -70°C under sterile conditions after reconstitution. 1 month, 2 to 8°C under sterile conditions after reconstitution.
Shipping:	The product is shipped at 4°C. Upon receipt, store it immediately at the temperature recommended above.

Application Information

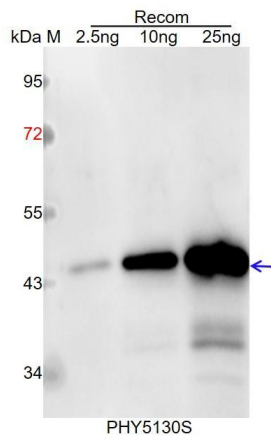
Recommended Dilution:	Western Blot (1:1000-1:5000) Note: Optimal dilutions/concentrations should be determined by the end user.
Expected / apparent MW:	68 kDa
Predicted Reactivity:	Among species analyzed, the sequence of the synthetic peptide used for immunization is 100% homologous with the sequence in

Research Use Only

Medicago truncatula, Brassica napus, Brassica rapa, Populus trichocarpa, Glycine max, Gossypium raimondii, Arabidopsis thaliana, Physcomitrella patens, Cucumis sativus, Vitis vinifera, Solanum lycopersicum, Solanum tuberosum, Nicotiana tabacum, Spinacia oleracea, Chlamydomonas reinhardtii, Panicum virgatum, Zea mays, Sorghum bicolor, Setaria viridis, Oryza sativa, Hordeum vulgare, Triticum aestivum.

For homologues with other species especially algae, please contact tech support at tech@phytoab.com.

Application Example



Recom: 2.5 ng, 10 ng and 25 ng recombinant protein containing the peptide for immunization and having a molecular mass of 45 kDa.

Electrophoresis: 12% SDS-PAGE

Transfer: blotting to NC (nitrocellulose) membrane for 1 h.

Blocking: 5% skim milk at RT or 4°C for 1 h.

Primary antibody: 1:1000 dilution overnight at 4°C.

Secondary antibody: 1:10000 dilution using Goat Anti-Rabbit IgG H&L (HRP) (Cat# PHY6000).

Detection: using chemiluminescence substrate and image were captured with CCD camera.