

# Anti-S-(hydroxymethyl)glutathione dehydrogenase antibody

Catalog: PHY0203A

## Product Information

<b>Description:</b>	Rabbit polyclonal antibody
<b>Background:</b>	S-nitrosoglutathione reductase (GSNOR) (also known as class III type alcohol dehydrogenase) is believed to modulate effects of reactive oxygen and nitrogen species through catabolism of S-nitrosoglutathione (GSNO).
<b>Synonyms:</b>	GSNOR, ADH2, ALCOHOL DEHYDROGENASE 2, ATGSNOR1, HOT5, PAR2, PARAQUAT RESISTANT 2, SENSITIVE TO HOT TEMPERATURES 5
<b>Immunogen:</b>	KLH-conjugated synthetic peptide (14 aa from Central section) derived from <i>Arabidopsis thaliana</i> GSNOR (AT5G43940).
<b>Form:</b>	Lyophilized
<b>Quantity:</b>	150 µg
<b>Purification:</b>	Immunogen affinity purified
<b>Reconstitution:</b>	Reconstitution with 150µl of 0.01M sterile PBS. "Note: please spin tube briefly prior to opening it to avoid any losses that might occur from lyophilized material adhering to the cap or sides of the tube".
<b>Stability &amp; Storage:</b>	Use a manual defrost freezer and avoid repeated freeze-thaw cycles. 12 months from date of receipt, -20 to -70°C as supplied. 6 months, -20 to -70°C under sterile conditions after reconstitution. 1 month, 2 to 8°C under sterile conditions after reconstitution.
<b>Shipping:</b>	The product is shipped at 4°C. Upon receipt, store it immediately at the temperature recommended above.

## Application Information

<b>Recommended Dilution:</b>	Western Blot (1:1000-1:2000) Note: Optimal dilutions/concentrations should be determined by the end user.
<b>Expected / apparent MW:</b>	42 kDa
<b>Confirmed Reactivity:</b>	<i>Arabidopsis thaliana</i>
<b>Predicted Reactivity:</b>	Among species analyzed, the sequence of the synthetic peptide used for immunization is 100% homologues with the sequence in <i>Brassica</i>

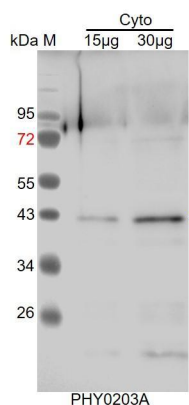
Research Use Only

*rapa*, *Brassica napus*, and 80-99% homologues with the sequence in *Solanum lycopersicum*, *Oryza sativa*, *Gossypium raimondii*, *Solanum tuberosum*, *Triticum aestivum*, *Hordeum vulgare*, *Populus trichocarpa*, *Zea mays*, *Sorghum bicolor*, *Nicotiana tabacum*, *Cucumis sativus*, *Panicum virgatum*, *Glycine max*, *Medicago truncatula*, *Spinacia oleracea*, *Setaria viridis*.

For more species homologues information, please contact tech support at [tech@phytoab.com](mailto:tech@phytoab.com).

## Application Example

### Example1:



Cyto: 15 µg, and 30 µg cytosolic protein from *Arabidopsis thaliana*, respectively.

**Electrophoresis:** 15% SDS-PAGE

**Transfer:** blotting to NC (nitrocellulose) membrane for 1 h.

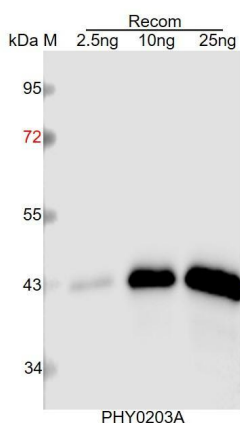
**Blocking:** 5% skim milk at RT or 4°C for 1 h.

**Primary antibody:** 1:2000 dilution overnight at 4°C.

**Secondary antibody:** 1:10000 dilution using Goat Anti-Rabbit IgG H&L (HRP) (Cat# PHY6000)

**Detection:** using chemiluminescence substrate and image were captured with CCD camera.

### Example2:



Recom: 2.5 ng, 10 ng and 25 ng recombinant protein containing the peptide for immunization and having a molecular mass of 43 kDa.

**Electrophoresis:** 12% SDS-PAGE

**Transfer:** blotting to NC (nitrocellulose) membrane for 1 h.

**Blocking:** 5% skim milk at RT or 4°C for 1 h.

**Primary antibody:** 1:1000 dilution overnight at 4°C.

**Secondary antibody:** 1:10000 dilution using Goat Anti-Rabbit IgG H&L (HRP) (Cat# PHY6000).

**Detection:** using chemiluminescence substrate and image were captured with CCD camera.

