

# Anti-RNA polymerase subunit alpha antibody

Catalog: PHY3975S

## Product Information

<b>Description:</b>	Rabbit polyclonal antibody
<b>Background:</b>	In chloroplasts, transcription of plastid genes is mediated by two types of RNA polymerase: plastid-encoded RNA polymerase (PEP) and nuclear encoded RNA polymerase (NEP). PEP is composed of four coresubunits ( $\alpha$ , $\beta$ , $\beta'$ , $\beta''$ ) and a promoter recognition subunit ( $\sigma$ factor). RpoA (ATCG00740) is the $\alpha$ subunit of PEP.
<b>Synonyms:</b>	RpoA, RNA POLYMERASE SUBUNIT ALPHA
<b>Immunogen:</b>	KLH-conjugated synthetic peptide (15 aa from Central section) derived from <i>Arabidopsis thaliana</i> RpoA (ATCG00740).
<b>Form:</b>	Lyophilized
<b>Quantity:</b>	150 $\mu$ g
<b>Purification:</b>	Serum Peptide affinity form antibody available upon request at <a href="mailto:info@phytoab.com">info@phytoab.com</a> .
<b>Reconstitution:</b>	Reconstitution with 150 $\mu$ l of sterile water. "Note: please spin tube briefly prior to opening it to avoid any losses that might occur from lyophilized material adhering to the cap or sides of the tube".
<b>Stability &amp; Storage:</b>	Use a manual defrost freezer and avoid repeated freeze-thaw cycles. 12 months from date of receipt, -20 to -70°C as supplied. 6 months, -20 to -70°C under sterile conditions after reconstitution. 1 month, 2 to 8°C under sterile conditions after reconstitution.
<b>Shipping:</b>	The product is shipped at 4°C. Upon receipt, store it immediately at the temperature recommended above.

## Application Information

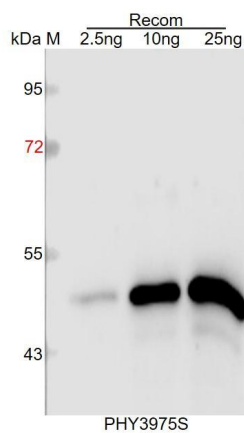
<b>Recommended Dilution:</b>	Western Blot (1:1000-1:2000) Note: Optimal dilutions/concentrations should be determined by the end user.
<b>Expected / apparent MW:</b>	38 kDa
<b>Predicted Reactivity:</b>	Among species analyzed, the sequence of the synthetic peptide used for immunization is 80-99% homologues with the sequence in

Research Use Only

*Brassica napus, Brassica rapa, Populus trichocarpa, Nicotiana tabacum, Cucumis sativus, Vitis vinifera, Gossypium raimondii, Solanum tuberosum, Solanum lycopersicum, Triticum aestivum, Oryza sativa, Medicago truncatula, Hordeum vulgare, Zea mays, Leymus chinensis, Panicum virgatum, Setaria viridis, Sorghum bicolor, Spinacia oleracea, Glycine max.*

For more species homologues information, please contact tech support at [tech@phytoab.com](mailto:tech@phytoab.com).

## Application Example



Recom: 2.5 ng, 10 ng and 25 ng recombinant protein containing the peptide for immunization and having a molecular mass of 50 kDa.

**Electrophoresis:** 12% SDS-PAGE

**Transfer:** blotting to NC (nitrocellulose) membrane for 1 h.

**Blocking:** 5% skim milk at RT or 4°C for 1 h.

**Primary antibody:** 1:1000 dilution overnight at 4°C.

**Secondary antibody:** 1:10000 dilution using Goat Anti-Rabbit IgG H&L (HRP) (Cat# PHY6000).

**Detection:** using chemiluminescence substrate and image were captured with CCD camera.