

Anti-CRS2-associated factor 1, mitochondrial antibody

Catalog: PHY3996S

Product Information

| | |
|--------------------------------|---|
| Description: | Rabbit polyclonal antibody |
| Background: | mCSF1 is a nuclear CRM protein required for the processing of many mitochondrial introns. It is involved in the biogenesis of respiratory complexes I and IV in <i>Arabidopsis</i> . |
| Synonyms: | mCSF1, MCSF1, MITOCHONDRIAL CAF-LIKE SPLICING FACTOR 1 |
| Immunogen: | KLH-conjugated synthetic peptide (16 aa from N terminal section) derived from <i>Arabidopsis thaliana</i> mCSF1 (AT4G31010). |
| Form: | Lyophilized |
| Quantity: | 150 µg |
| Purification: | Serum Peptide affinity form antibody available upon request at info@phytoab.com . |
| Reconstitution: | Reconstitution with 150 µl of sterile water. "Note: please spin tube briefly prior to opening it to avoid any losses that might occur from lyophilized material adhering to the cap or sides of the tube". |
| Stability &Storage: | Use a manual defrost freezer and avoid repeated freeze-thaw cycles. 12 months from date of receipt, -20 to -70°C as supplied. 6 months, -20 to -70°C under sterile conditions after reconstitution. 1 month, 2 to 8°C under sterile conditions after reconstitution. |
| Shipping: | The product is shipped at 4°C. Upon receipt, store it immediately at the temperature recommended above. |

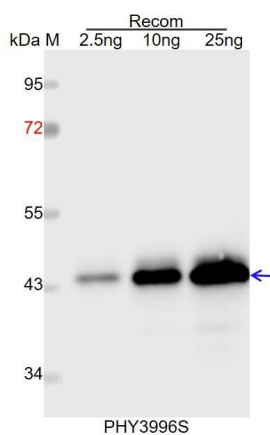
Application Information

| | |
|--------------------------------|--|
| Recommended Dilution: | Western Blot (1:1000-1:2000) Note: Optimal dilutions/concentrations should be determined by the end user. |
| Expected / apparent MW: | 46 kDa |
| Predicted Reactivity: | Among species analyzed, the sequence of the synthetic peptide used for immunization is 80-99% homologues with the sequence in <i>Brassica napus</i> , <i>Brassica rapa</i> , <i>Medicago truncatula</i> , <i>Hordeum</i> |

Research Use Only

vulgare, *Panicum virgatum*, *Triticum aestivum*, *Setaria viridis*, *Oryza sativa*, *Populus trichocarpa*, *Cucumis sativus*, *Gossypium raimondii*, *Sorghum bicolor*, *Zea mays*, *Nicotiana tabacum*, *Solanum lycopersicum*, *Solanum tuberosum*, *Vitis vinifera*, *Spinacia oleracea*.
For more species homologues information, please contact tech support at tech@phytoab.com.

Application Example



Recom: 2.5 ng, 10 ng and 25 ng recombinant protein containing the peptide for immunization and having a molecular mass of 44 kDa.

Electrophoresis: 12% SDS-PAGE

Transfer: blotting to NC (nitrocellulose) membrane for 1 h.

Blocking: 5% skim milk at RT or 4°C for 1 h.

Primary antibody: 1:1000 dilution overnight at 4°C.

Secondary antibody: 1:10000 dilution using Goat Anti-Rabbit IgG H&L (HRP) (Cat# PHY6000).

Detection: using chemiluminescence substrate and image were captured with CCD camera.