

Anti-Bifunctional enolase 2 antibody

Catalog: PHY0213S

Product Information

Description:	Rabbit polyclonal antibody
Background:	LOS2 involved in light-dependent cold tolerance and encodes an enolase. It is tyrosine-phosphorylated and its phosphorylation state is modulated in response to ABA in <i>Arabidopsis thaliana</i> seeds.
Synonyms:	LOS2, ENO2, ENOLASE 2, LOW EXPRESSION OF OSMOTICALLY RESPONSIVE GENES 2
Immunogen:	KLH-conjugated synthetic peptide (15 aa from central section) derived from <i>Arabidopsis thaliana</i> LOS2 (AT2G36530).
Form:	Lyophilized
Quantity:	150 µg
Purification:	Serum Peptide affinity form antibody available upon request at info@phytoab.com .
Reconstitution:	Reconstitution with 150µl of sterile water. "Note: please spin tube briefly prior to opening it to avoid any losses that might occur from lyophilized material adhering to the cap or sides of the tube".
Stability & Storage:	Use a manual defrost freezer and avoid repeated freeze-thaw cycles. 12 months from date of receipt, -20 to -70°C as supplied. 6 months, -20 to -70°C under sterile conditions after reconstitution. 1 month, 2 to 8°C under sterile conditions after reconstitution.
Shipping:	The product is shipped at 4°C. Upon receipt, store it immediately at the temperature recommended above.

Application Information

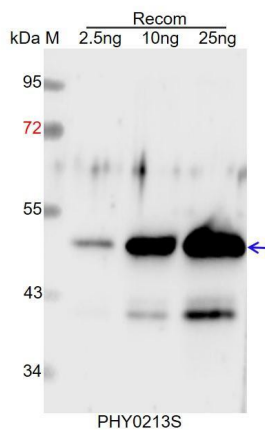
Recommended Dilution:	Western Blot (1:1000-1:2000) Note: Optimal dilutions/concentrations should be determined by the end user.
Expected / apparent MW:	48 kDa
Predicted Reactivity:	Among species analyzed, the sequence of the synthetic peptide used for immunization is 80-99% homologues with the sequence in and homologues with the sequence in <i>Oryza sativa</i> , <i>Glycine max</i> ,

Research Use Only

Brassica napus, Brassica rapa, Medicago truncatula, Sorghum bicolor, Zea mays, Panicum virgatum, Setaria viridis, Populus trichocarpa, Spinacia oleracea, Triticum aestivum, Nicotiana tabacum, Solanum tuberosum, Cucumis sativus, Solanum lycopersicum, Gossypium raimondii, Hordeum vulgare.

For more species homologues information, please contact tech support at tech@phytoab.com.

Application Example



Recom: 2.5 ng, 10 ng and 25 ng recombinant protein containing the peptide for immunization and having a molecular mass of 51 kDa.

Electrophoresis: 12% SDS-PAGE

Transfer: blotting to NC (nitrocellulose) membrane for 1 h.

Blocking: 5% skim milk at RT or 4°C for 1 h.

Primary antibody: 1:1000 dilution overnight at 4°C.

Secondary antibody: 1:10000 dilution using Goat Anti-Rabbit IgG H&L (HRP) (Cat# PHY6000).

Detection: using chemiluminescence substrate and image were captured with CCD camera.