

Anti-Protein SHORT-ROOT antibody

Catalog: PHY3867S

Product Information

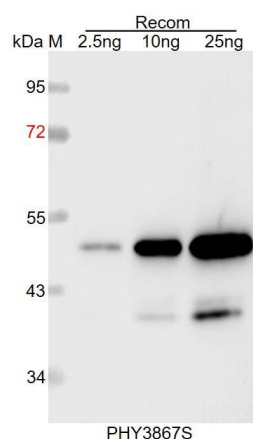
Description:	Rabbit polyclonal antibody
Background:	SHR involved in radial organization of the root and shoot axial organs. It is essential for normal shoot gravitropism. It moves in a highly specific manner from the cells of the stele in which it is synthesized outward. SHORT-ROOT forms a network in combination with JACKDAW, BLUEJAY AND SCARECROW to regulate tissue patterning through asymmetric cell division. The ground tissue lineage remains in shortroot mutant, while it is progressively lost in the triple mutant bluejay jackdaw scarecrow and double mutant jackdaw scarecrow. In addition, ground tissue basal identity remains in shortroot mutant while it is defective in the quadruple mutant bluejay jackdaw magpie nutcracker
Synonyms:	SHR, EAL1, ENDODERMAL-AMYLOPLAST LESS 1, SGR7, SHOOT GRAVITROPISM 7, SHORT ROOT
Immunogen:	KLH-conjugated synthetic peptide (17 aa from C terminal section) derived from <i>Arabidopsis thaliana</i> SHR (AT4G37650).
Form:	Lyophilized
Quantity:	150 µg
Purification:	Serum Peptide affinity form antibody available upon request at info@phytoab.com .
Reconstitution:	Reconstitution with 150µl of sterile water. "Note: please spin tube briefly prior to opening it to avoid any losses that might occur from lyophilized material adhering to the cap or sides of the tube".
Stability & Storage:	Use a manual defrost freezer and avoid repeated freeze-thaw cycles. 12 months from date of receipt, -20 to -70°C as supplied. 6 months, -20 to -70°C under sterile conditions after reconstitution. 1 month, 2 to 8°C under sterile conditions after reconstitution.
Shipping:	The product is shipped at 4°C. Upon receipt, store it immediately at the temperature recommended above.

Application Information

Research Use Only

Recommended Dilution:	Western Blot (1:1000-1:2000)
	Note: Optimal dilutions/concentrations should be determined by the end user.
Expected / apparent MW:	59 kDa
Predicted Reactivity:	Among species analyzed, the sequence of the synthetic peptide used for immunization is 100% homologues with the sequence in <i>Brassica napus</i> , <i>Brassica rapa</i> .
	For more species homologues information, please contact tech support at tech@phytoab.com .

Application Example



Recom: 2.5 ng, 10 ng and 25 ng recombinant protein containing the peptide for immunization and having a molecular mass of 52 kDa.

Electrophoresis: 12% SDS-PAGE

Transfer: blotting to NC (nitrocellulose) membrane for 1 h.

Blocking: 5% skim milk at RT or 4°C for 1 h.

Primary antibody: 1:1000 dilution overnight at 4°C.

Secondary antibody: 1:10000 dilution using Goat Anti-Rabbit IgG H&L (HRP) (Cat# PHY6000).

Detection: using chemiluminescence substrate and image were captured with CCD camera.