

# Anti-Mitogen-activated protein kinase 6, C-terminal antibody

Catalog: PHY3929S

## Product Information

|                                 |  |
|---------------------------------|--|
| <b>Description:</b>             | Rabbit polyclonal antibody   |
| <b>Background:</b>              | In Arabidopsis, MPK3 (AT3G45640), MPK4 (AT4G01370), and MPK6 (AT2G43790) are the best characterized members of the MAPK family and have also been demonstrated to be part of the ABA signal transduction pathway. MPK6 is induced by pathogens, ethylene biosynthesis, oxidative stress and osmotic stress. Also is involved in ovule development. |
| <b>Synonyms:</b>                | MPK6, ATMAPK6, ATMPK6, MAP KINASE 6, MAPK6   |
| <b>Immunogen:</b>               | KLH-conjugated synthetic peptide (15 aa from C terminal section) derived from <i>Arabidopsis thaliana</i> MPK6 (AT2G43790).  |
| <b>Form:</b>                    | Lyophilized  |
| <b>Quantity:</b>                | 150 µg   |
| <b>Purification:</b>            | Serum<br>Peptide affinity form antibody available upon request at <a href="mailto:info@phytoab.com">info@phytoab.com</a> .   |
| <b>Reconstitution:</b>          | Reconstitution with 150µl of sterile water.<br>"Note: please spin tube briefly prior to opening it to avoid any losses that might occur from lyophilized material adhering to the cap or sides of the tube".   |
| <b>Stability &amp; Storage:</b> | Use a manual defrost freezer and avoid repeated freeze-thaw cycles.<br>12 months from date of receipt, -20 to -70°C as supplied.<br>6 months, -20 to -70°C under sterile conditions after reconstitution.<br>1 month, 2 to 8°C under sterile conditions after reconstitution.  |
| <b>Shipping:</b>                | The product is shipped at 4°C. Upon receipt, store it immediately at the temperature recommended above.  |

## Application Information

|                                |  |
|--------------------------------|--|
| <b>Recommended Dilution:</b>   | Western Blot (1:1000-1:2000)<br>Note: Optimal dilutions/concentrations should be determined by the end user. |
| <b>Expected / apparent MW:</b> | 45 kDa   |

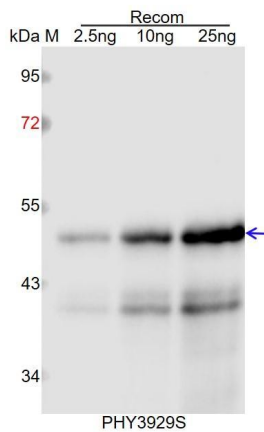
Research Use Only

### Predicted Reactivity:

Among species analyzed, the sequence of the synthetic peptide used for immunization is 80-99% homologues with the sequence in *Brassica napus*, *Brassica rapa*, *Vitis vinifera*, *Glycine max*, *Hordeum vulgare*, *Cucumis sativus*, *Oryza sativa*, *Triticum aestivum*, *Sorghum bicolor*, *Populus trichocarpa*, *Zea mays*, *Setaria viridis*, *Gossypium raimondii*, *Solanum tuberosum*, *Solanum lycopersicum*, *Panicum virgatum*, *Nicotiana tabacum*, *Medicago truncatula*, *Spinacia oleracea*.

For more species homologues information, please contact tech support at [tech@phytoab.com](mailto:tech@phytoab.com).

### Application Example



Recom: 2.5 ng, 10 ng and 25 ng recombinant protein containing the peptide for immunization and having a molecular mass of 50 kDa.

**Electrophoresis:** 12% SDS-PAGE

**Transfer:** blotting to NC (nitrocellulose) membrane for 1 h.

**Blocking:** 5% skim milk at RT or 4°C for 1 h.

**Primary antibody:** 1:1000 dilution overnight at 4°C.

**Secondary antibody:** 1:10000 dilution using Goat Anti-Rabbit IgG H&L (HRP) (Cat# PHY6000).

**Detection:** using chemiluminescence substrate and image were captured with CCD camera.