

Anti-DEFECTIVE ACCUMULATION OF CYTOCHROME B6/F COMPLEX antibody

Catalog: PHY2128S

Product Information

| | |
|---------------------------------|---|
| Description: | Rabbit polyclonal antibody |
| Background: | DAC encodes a thylakoid membrane protein with two predicted transmembrane domains that is conserved from cyanobacteria to vascular plants. DAC is involved in the accumulation of the cytochrome b6/f complex. |
| Synonyms: | DAC, DEFECTIVE ACCUMULATION OF CYTOCHROME B6/F COMPLEX |
| Immunogen: | KLH-conjugated synthetic peptide (16 aa from C terminal section) derived from <i>Arabidopsis thaliana</i> DAC (AT3G17930). |
| Form: | Lyophilized |
| Quantity: | 150 µg |
| Purification: | Serum Peptide affinity form antibody available upon request at info@phytoab.com . |
| Reconstitution: | Reconstitution with 150 µl of sterile water. "Note: please spin tube briefly prior to opening it to avoid any losses that might occur from lyophilized material adhering to the cap or sides of the tube". |
| Stability & Storage: | Use a manual defrost freezer and avoid repeated freeze-thaw cycles. 12 months from date of receipt, -20 to -70°C as supplied. 6 months, -20 to -70°C under sterile conditions after reconstitution. 1 month, 2 to 8°C under sterile conditions after reconstitution. |
| Shipping: | The product is shipped at 4°C. Upon receipt, store it immediately at the temperature recommended above. |

Application Information

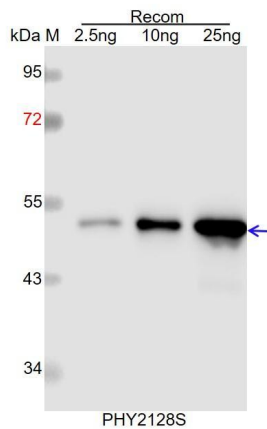
| | |
|--------------------------------|---|
| Recommended Dilution: | Western Blot (1:1000-1:5000) Note: Optimal dilutions/concentrations should be determined by the end user. |
| Expected / apparent MW: | 21 kDa |
| Predicted Reactivity: | Among species analyzed, the sequence of the synthetic peptide used for immunization is 100% homologues with the sequence in <i>Brassica rapa</i> , <i>Brassica napus</i> , and 80-99% homologues with the sequence in |

Research Use Only

Glycine max, Nicotiana tabacum, Solanum tuberosum, Solanum lycopersicum, Medicago truncatula, Setaria viridis, Panicum virgatum, Oryza sativa, Vitis vinifera, Populus trichocarpa, Gossypium raimondii, Zea mays, Sorghum bicolor.

For more species homologues information, please contact tech support at tech@phytoab.com.

Application Example:



Recom: 2.5 ng, 10 ng and 25 ng recombinant protein containing the peptide for immunization and having a molecular mass of 52 kDa.

Electrophoresis: 12% SDS-PAGE

Transfer: blotting to NC (nitrocellulose) membrane for 1 h.

Blocking: 5% skim milk at RT or 4°C for 1 h.

Primary antibody: 1:1000 dilution overnight at 4°C.

Secondary antibody: 1:10000 dilution using Goat Anti-Rabbit IgG H&L (HRP) (Cat# PHY6000).

Detection: using chemiluminescence substrate and image were captured with CCD camera.