

Anti-Pyrophosphate-energized membrane proton pump 2 antibody

Catalog: PHY1008S

Product Information

Description:	Rabbit polyclonal antibody
Background:	VHP2;1 is a type II H ⁺ -PPases that localizes to and function as a proton pump of the Golgi apparatus in most tissues except for mature leaves. VHP2;1 had an additional characteristic, namely Zn ²⁺ -dependent activity.
Synonyms:	VHP2;1, ATVHP2;1, AVP2, AVPL1, VACUOLAR H ⁺ -PYROPHOSPHATASE 2, VACUOLAR-PYROPHOSPHATASE LIKE PROTEIN 1, VP2.
Immunogen:	KLH-conjugated synthetic peptide of VHP2;1 derived from <i>Arabidopsis thaliana</i> AT1G78920.
Form:	Lyophilized
Quantity:	150 µg
Purification:	Serum Peptide affinity form antibody available upon request at info@phytoab.com .
Reconstitution:	Reconstitution with 150µl of sterile water. "Note: please spin tube briefly prior to opening it to avoid any losses that might occur from lyophilized material adhering to the cap or sides of the tube".
Stability & Storage:	Use a manual defrost freezer and avoid repeated freeze-thaw cycles. 12 months from date of receipt, -20 to -70°C as supplied. 6 months, -20 to -70°C under sterile conditions after reconstitution. 1 month, 2 to 8°C under sterile conditions after reconstitution.
Shipping:	The product is shipped at 4°C. Upon receipt, store it immediately at the temperature recommended above.

Application Information

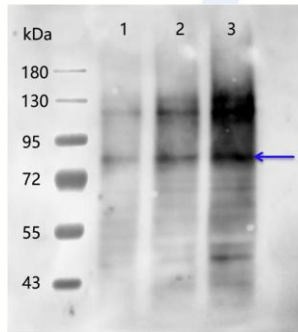
Applications:	Western Blot (1:1000-1:2000) Note: Optimal dilutions/concentrations should be determined by the end user.
Expected Results:	85 kDa
Confirmed Reactivity:	<i>Arabidopsis thaliana</i>

Research Use Only

Predicted Reactivity:

The sequence of the synthetic peptide used for immunization is 86% homologues with the sequence in VHP2;2 (AT1G16780).
For more species homologues information, please contact tech support at tech@phytoab.com.

Application Example



Lane 1: 20 µg total protein from *Arabidopsis thaliana* leaf.

Lane 2: 40 µg total protein from *Arabidopsis thaliana* leaf.

Lane 3: 80 µg total protein from *Arabidopsis thaliana* leaf.

Electrophoresis: 10% SDS-PAGE

Transfer: blotting to NC (nitrocellulose) membrane for 1 h.

Blocking: 5% skim milk at RT or 4°C for 1 h.

PHY1008S

Primary antibody: 1:1000 dilution overnight at 4°C.

Secondary antibody: 1:10000 dilution using Goat Anti-Rabbit IgG H&L(HRP) (Cat# PHY6000)

Detection: using chemiluminescence substrate and image were captured with CCD camera.