

Anti-Vacuolar-sorting receptor 1 antibody

Catalog: PHY3859S

Product Information

Description:	Rabbit polyclonal antibody
Background:	VSR1 is the Vacuolar Sorting Receptor-1 (VSR-1)/Epidermal Growth Factor Receptor-like protein1(VSR-1/ATELP1) which is Involved in sorting seed storage proteins into vacuoles.
Synonyms:	VSR1, ARABIDOPSIS THALIANA EPIDERMAL GROWTH FACTOR RECEPTOR-LIKE PROTEIN, ATELP, ATELP1, ATVSR1, BINDING PROTEIN OF 80 KDA 1;1, BP-80, BP80, BP80-1;1, BP80B, GFS1, GREEN FLUORESCENT SEED 1, MODIFIED TRANSPORT TO THE VACUOLE 18, MTV18, VACUOLAR SORTING RECEPTOR 1;1, VACUOLAR SORTING RECEPTOR HOMOLOG 1, VSR1;1
Immunogen:	KLH-conjugated synthetic peptide (18 aa from N terminal section) derived from <i>Arabidopsis thaliana</i> VSR1 (AT3G52850).
Form:	Lyophilized
Quantity:	150 µg
Purification:	Serum Peptide affinity form antibody available upon request at info@phytoab.com .
Reconstitution:	Reconstitution with 150 µl of sterile water. "Note: please spin tube briefly prior to opening it to avoid any losses that might occur from lyophilized material adhering to the cap or sides of the tube".
Stability & Storage:	Use a manual defrost freezer and avoid repeated freeze-thaw cycles. 12 months from date of receipt, -20 to -70°C as supplied. 6 months, -20 to -70°C under sterile conditions after reconstitution. 1 month, 2 to 8°C under sterile conditions after reconstitution.
Shipping:	The product is shipped at 4°C. Upon receipt, store it immediately at the temperature recommended above.

Application Information

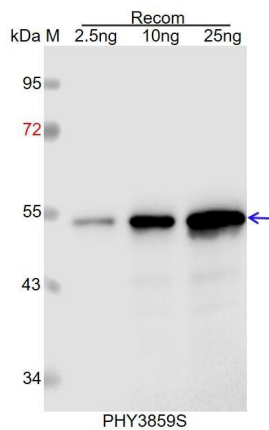
Recommended Dilution:	Western Blot (1:1000-1:2000) Note: Optimal dilutions/concentrations should be determined by the end user.
------------------------------	--

Research Use Only

Expected / apparent MW: 69 kDa

Predicted Reactivity: Among species analyzed, the sequence of the synthetic peptide used for immunization is 80-99% homologues with the sequence in *Brassica rapa*, *Brassica napus*, *Gossypium raimondii*.
For more species homologues information, please contact tech support at tech@phytoab.com.

Application Example



Recom: 2.5 ng, 10 ng and 25 ng recombinant protein containing the peptide for immunization and having a molecular mass of 54 kDa.

Electrophoresis: 12% SDS-PAGE

Transfer: blotting to NC (nitrocellulose) membrane for 1 h.

Blocking: 5% skim milk at RT or 4°C for 1 h.

Primary antibody: 1:1000 dilution overnight at 4°C.

Secondary antibody: 1:10000 dilution using Goat Anti-Rabbit IgG H&L (HRP) (Cat# PHY6000).

Detection: using chemiluminescence substrate and image were captured with CCD camera.