

Anti-Lhca3 protein of LHCI antibody

Catalog: PHY2976S

Product Information

Description:	Rabbit polyclonal antibody
Background:	The light-harvesting complex (LHC) functions as a light receptor, it captures and delivers excitation energy to photosystem with which it is closely associated. The light-harvesting protein Lhca3 is one of the four main and highly conserved types of chlorophyll a/b-binding proteins (Lhca1-4) of the light harvesting antenna (LHCI) of plant photosystem I. Lhca3 is imported as a precursor from the cytosol into the chloroplast. Upon integration in the thylakoid membrane Lhca3 forms a heterodimer (LHCI-680) with Lhca2 that associates with the PSI core close to PsaF and PsaK.
Synonyms:	LHCA3, PHOTOSYSTEM I LIGHT HARVESTING COMPLEX GENE 3
Immunogen:	KLH-conjugated synthetic peptide (16 aa from Central section) derived from <i>Arabidopsis thaliana</i> LHCA3 (AT1G61520).
Form:	Lyophilized
Quantity:	150 µg
Purification:	Serum Peptide affinity form antibody available upon request at info@phytoab.com .
Reconstitution:	Reconstitution with 150 µl of sterile water. "Note: please spin tube briefly prior to opening it to avoid any losses that might occur from lyophilized material adhering to the cap or sides of the tube".
Stability & Storage:	Use a manual defrost freezer and avoid repeated freeze-thaw cycles. 12 months from date of receipt, -20 to -70°C as supplied. 6 months, -20 to -70°C under sterile conditions after reconstitution. 1 month, 2 to 8°C under sterile conditions after reconstitution.
Shipping:	The product is shipped at 4°C. Upon receipt, store it immediately at the temperature recommended above.

Application Information

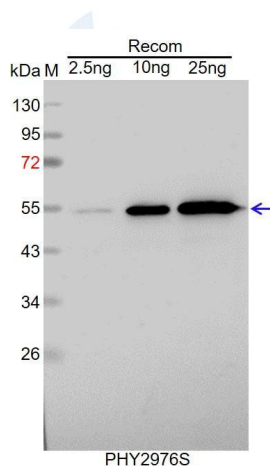
Recommended Dilution:	Western Blot (1:1000-1:2000) Note: Optimal dilutions/concentrations should be determined by the end user.
------------------------------	--

Research Use Only

Expected / apparent MW: 29 kDa

Predicted Reactivity: Among species analyzed, the sequence of the synthetic peptide used for immunization is 100% homologues with the sequence in *Sorghum bicolor*, *Brassica rapa*, *Medicago truncatula*, *Spinacia oleracea*, *Brassica napus*, *Triticum aestivum*, *Hordeum vulgare*, *Panicum virgatum*, *Zea mays*, *Setaria viridis*, and 80-99% homologues with the sequence in *Oryza sativa*, *Populus trichocarpa*, *Vitis vinifera*, *Glycine max*, *Gossypium raimondii*, *Solanum tuberosum*, *Nicotiana tabacum*, *Cucumis sativus*, *Solanum lycopersicum*, *Physcomitrium patens*.
For more species homologues information, please contact tech support at tech@phytoab.com.

Application Example



Recom: 2.5 ng, 10 ng and 25 ng recombinant protein containing the peptide for immunization and having a molecular mass of 54 kDa.

Electrophoresis: 12% SDS-PAGE

Transfer: blotting to NC (nitrocellulose) membrane for 1 h.

Blocking: 5% skim milk at RT or 4°C for 1 h.

Primary antibody: 1:1000 dilution overnight at 4°C.

Secondary antibody: 1:10000 dilution using Goat Anti-Rabbit IgG H&L (HRP) (Cat# PHY6000).

Detection: using chemiluminescence substrate and image were captured with CCD camera.