

# Anti-Small ubiquitin-related modifier 1 antibody

Catalog: PHY3847S

## Product Information

<b>Description:</b>	Rabbit polyclonal antibody
<b>Background:</b>	SUMO1 is a small ubiquitin-like modifier (SUMO) polypeptide that becomes covalently attached to various intracellular protein targets, much like ubiquitination, leading to post-translational modification of those targets.
<b>Synonyms:</b>	SUMO1, ARABIDOPSIS THALIANA SMALL UBIQUITIN-LIKE MODIFIER 1, ATSUMO1, SMALL UBIQUITIN-LIKE MODIFIER 1, SUM1, SUMO 1
<b>Immunogen:</b>	KLH-conjugated synthetic peptide (16 aa from C terminal section) derived from <i>Arabidopsis thaliana</i> SUMO1 (AT4G26840).
<b>Form:</b>	Lyophilized
<b>Quantity:</b>	150 µg
<b>Purification:</b>	Serum Peptide affinity form antibody available upon request at <a href="mailto:info@phytoab.com">info@phytoab.com</a> .
<b>Reconstitution:</b>	Reconstitution with 150µl of sterile water. "Note: please spin tube briefly prior to opening it to avoid any losses that might occur from lyophilized material adhering to the cap or sides of the tube".
<b>Stability &amp; Storage:</b>	Use a manual defrost freezer and avoid repeated freeze-thaw cycles. 12 months from date of receipt, -20 to -70°C as supplied. 6 months, -20 to -70°C under sterile conditions after reconstitution. 1 month, 2 to 8°C under sterile conditions after reconstitution.
<b>Shipping:</b>	The product is shipped at 4°C. Upon receipt, store it immediately at the temperature recommended above.

## Application Information

<b>Recommended Dilution:</b>	Western Blot (1:1000-1:2000) Note: Optimal dilutions/concentrations should be determined by the end user.
<b>Expected / apparent MW:</b>	11 kDa
<b>Predicted Reactivity:</b>	Among species analyzed, the sequence of the synthetic peptide used for immunization is 100% homologues with the sequence in <i>Brassica napus</i> , <i>Brassica rapa</i> , and 80-99% homologues with the sequence in

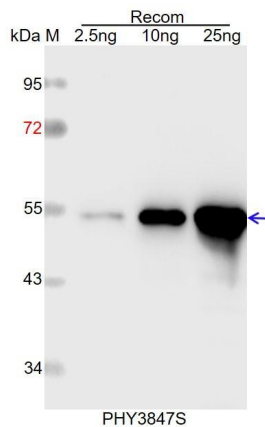
Research Use Only

*Glycine max, Triticum aestivum, Medicago truncatula, Cucumis sativus, Solanum tuberosum, Solanum lycopersicum, Spinacia oleracea, Nicotiana tabacum, Populus trichocarpa, Physcomitrium patens, Hordeum vulgare, Vitis vinifera, Zea mays, Gossypium raimondii, Spinacia oleracea, Oryza sativa, Sorghum bicolor, Panicum virgatum, Gossypium raimondii, Setaria viridis.*

The sequence of the synthetic peptide used for immunization is 94% (15 / 16) homologues with the sequence in SUMO2 (AT5G55160).

For more species homologues information, please contact tech support at [tech@phytoab.com](mailto:tech@phytoab.com).

## Application Example



Recom: 2.5 ng, 10 ng and 25 ng recombinant protein containing the peptide for immunization and having a molecular mass of 54 kDa.

**Electrophoresis:** 12% SDS-PAGE

**Transfer:** blotting to NC (nitrocellulose) membrane for 1 h.

**Blocking:** 5% skim milk at RT or 4°C for 1 h.

**Primary antibody:** 1:1000 dilution overnight at 4°C.

**Secondary antibody:** 1:10000 dilution using Goat Anti-Rabbit IgG H&L (HRP) (Cat# PHY6000).

**Detection:** using chemiluminescence substrate and image were captured with CCD camera.